

Anti-CD86 Antibody (Clone C86/1146)

CATALOG NO:	A1569-100
ALTERNATIVE NAMES:	Activation B7-2 antigen; B lymphocyte activation antigen B72; CD28 antigen ligand 2; CD28LG2; CLS1; CTLA-4 counter-receptor B7.2; Early T-cell co-stimulatory molecule 1; ETC-1; FUN-1; LAB72; Ly-58; MB7-2; TS/A-2, B70, BU63, CD86, CD28LG2
AMOUNT:	100 µg
IMMUNOGEN:	Recombinant human full-length CD86 protein
HOST/ISOTYPE:	Mouse / IgG1, kappa
CLONALITY:	Monoclonal
CLONE:	C86/1146
MOL WEIGHT:	70 kDa
SPECIES REACTIVITY:	Human, Mouse and Rat
PURIFICATION:	Protein A/G purification
FORM:	Liquid
FORMULATION:	Supplied in 10 mM PBS with 0.05% BSA & 0.05% azide
STORAGE CONDITIONS:	Shipped at 4°C. Long term storage at -20°C.
DESCRIPTION:	This antibody recognizes a protein of 70 kDa, which is identified as CD86. CD86 is a type I transmembrane glycoprotein and a member of the immunoglobulin superfamily of cell surface receptors. It is expressed at high levels on resting peripheral monocytes and dendritic cells and at very low density on resting B and T lymphocytes. CD86 expression is rapidly upregulated by B cell specific stimuli with peak expression at 18 to 42 hours after stimulation. CD86, along with CD80/B71, is an important accessory molecule in T cell co-stimulation via its interaction with CD28 and CD152/CTLA4. Since CD86 has rapid kinetics of induction, it is believed to be the major CD28 ligand expressed early in the immune response. It is also found on malignant Hodgkin and Reed Sternberg (HRS) cells in Hodgkin's disease.

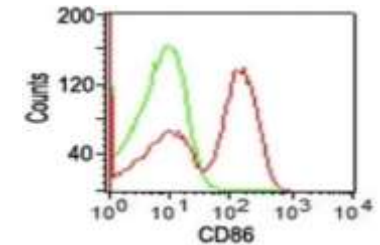
APPLICATION:

FC: 0.5-1 µg/1X10⁶ cells in 0.1 ml
 IF: 0.5-1 µg/ml
 WB: 0.5-1 µg/ml
 IHC: 2-4 µg/ml for 30 minutes at RT
 (Staining of formalin-fixed tissues requires boiling tissue sections in 10 mM Tris buffer with 1 mM EDTA, pH 9.0, for 10-20 min followed by cooling at RT for 20 minutes)

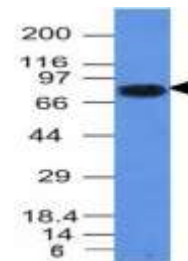
Note: This information is only intended as a guide. The optimal dilutions must be determined by the user.



Formalin-fixed, paraffin-embedded human Melanoma stained with CD86 Antibody (C86/1146).



Flow Cytometry of human PBMC's using CD86 Antibody (C86/1146).



Western Blot Analysis of Daudi Cell Lysate using CD86 Antibody (C86/1146).

RELATED PRODUCTS:

- Anti-CD86 Antibody (Cat. No. A1068)
- CD86 (Human) ELISA Kit (Cat. No. K4175)
- Human CellExp™ B7-2 /CD86, human recombinant (Cat. No. 7496)

FOR RESEARCH USE ONLY! Not to be used on humans.