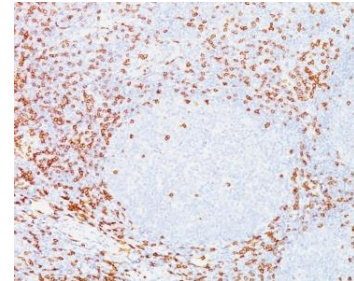


Anti-CD8A Antibody (C8/468)

CATALOG NO:	A1570-100
ALTERNATIVE NAMES:	CD8 antigen, alpha polypeptide (p32), T8/Leu-2 T-lymphocyte differentiation antigen, Ly3, LYT3, MAL, T-cell surface glycoprotein CD8 alpha chain, CD8A
AMOUNT:	100 µg
IMMUNOGEN:	Human CD8 recombinant protein
HOST/ISOTYPE:	Mouse / IgG1, kappa
CLONALITY:	Monoclonal
CLONE:	C8/468
MOL WEIGHT:	32 kDa
SPECIES REACTIVITY:	Human
PURIFICATION:	Protein A/G purified
FORM:	Liquid
FORMULATION:	Supplied in 10 mM PBS with 0.05% BSA & 0.05% azide
STORAGE CONDITIONS:	Shipped at 4°C. Long term storage at -20°C.
DESCRIPTION:	CD8 is a cell surface receptor expressed either as a heterodimer with the CD8 β chain (CD8 α/β) or as a homodimer (CD8 α/α). A majority of thymocytes and a subpopulation of mature T cells and NK cells express CD8a. CD8 binds to MHC class 1 and through its association with protein tyrosine kinase p56lck plays a role in T cell development and activation of mature T cells. For mature T-cells, CD4 and CD8 are mutually exclusive, so anti-CD8, generally used in conjunction with anti-CD4. It is a useful marker for distinguishing helper/inducer T-lymphocytes, and most peripheral T-cell lymphomas are CD4+/CD8-. Anaplastic large cell lymphoma is usually CD4+ and CD8-, and in T-lymphoblastic lymphoma/leukemia, CD4 and CD8 are often co-expressed. CD8 is also found in littoral cell angioma of the spleen.
APPLICATION:	FC: 0.5-1 µg/1X10 ⁶ cells in 0.1 ml IF: 0.5-1 µg/ml IHC: 0.5-1 µg/ml for 30 minutes at RT (Staining of formalin-fixed tissues requires boiling tissue sections in 10 mM citrate buffer, pH 6.0, for 10-20 min followed by cooling at RT for 20 minutes)

Note: This information is only intended as a guide. The optimal dilutions must be determined by the user.



Formalin-fixed, paraffin-embedded human Tonsil stained with CD8 Antibody (C8/468).

RELATED PRODUCTS:

- Anti-CD160 Antibody (**Cat. No. A1072**)
- Anti-CD45RO Antibody (Clone UCHL-1) (**Cat. No. A1542**)
- Anti-CD137/4-1BB Antibody (**Cat. No. A1087**)
- CD4 Antibody (**Cat. No. 6937**)
- CD8 FITC Monoclonal Antibody (Clone OKT-8) (**Cat. No. 6954**)
- CD8B, human recombinant (**Cat. No. 7320**)
- Human CellExp™ CD8b, Human Recombinant (**Cat. No. P1244**)
- Human CellExp™ LILRB2, human recombinant (**Cat. No. P1147**)
- QuickDetect™ CD8 (Human) ELISA Kit (**Cat. No. K4418**)

FOR RESEARCH USE ONLY! Not to be used on humans.