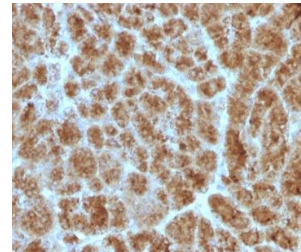


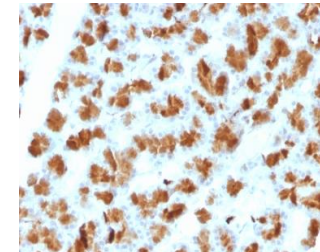
Anti-CELA3B / ELA3B Antibody (CELA3B/1257)

CATALOG NO:	A1574-100
ALTERNATIVE NAMES:	Chymotrypsin like elastase family member 3B (CELA3B); ELA3B; Elastase IIIB; Elastase-3B, Protease E
AMOUNT:	100 µg
IMMUNOGEN:	Recombinant human CELA3B protein fragment (a.a 82-238) (exact sequence is proprietary)
HOST/ISOTYPE:	Mouse / IgG1
CLONALITY:	Monoclonal
CLONE:	CELA3B/1257
MOL WEIGHT:	~17 kDa
SPECIES REACTIVITY:	Human, Mouse and Rat
PURIFICATION:	Protein A/G purified
FORM:	Liquid
FORMULATION:	Supplied in 10 mM PBS with 0.05% BSA & 0.05% azide
STORAGE CONDITIONS:	Shipped at 4°C. Long term storage at -20°C
DESCRIPTION:	This mAb recognizes a protein of ~30 kDa, identified as CELA3B (Chymotrypsin like elastase family member 3B). Elastases form a subfamily of serine proteases that hydrolyze many proteins in addition to elastin. Humans have six elastase genes which encode the structurally similar proteins elastase 1, 2, 2A, 2B, 3A, and 3B. Unlike other elastases, elastase 3B has little elastolytic activity. Like most of the human elastases, elastase 3B is secreted from the pancreas as a zymogen and, like other serine proteases such as trypsin, chymotrypsin and kallikrein; it has a digestive function in the intestine. Elastase 3B preferentially cleaves proteins after alanine residues. Elastase 3B may also function in the intestinal transport and metabolism of cholesterol. Both elastase 3A and elastase 3B have been referred to as protease E and as elastase 1, and excretion of this protein in fecal material is frequently used as a measure of pancreatic function in clinical assays.
APPLICATION:	FC: 0.5-1 µg/1X10 ⁶ cells in 0.1 ml IF: 0.5-1 µg/ml IHC: 0.5-1 µg/ml for 30 minutes at RT ELISA: Use Ab at 2-4 µg/ml for coating (Staining of formalin-fixed tissues requires boiling tissue sections in 10 mM Tris with 1 mM EDTA, pH 9.0, for 10-20 min followed by cooling at RT for 20 minutes)

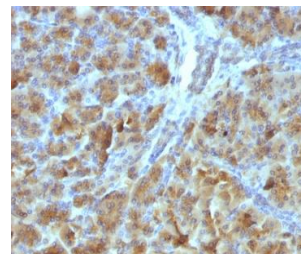
Note: This information is only intended as a guide. The optimal dilutions must be determined by the user.



Formalin-fixed, paraffin-embedded Human Pancreas stained with CELA3B Antibody (CELA3B/1257)



Formalin-fixed, paraffin-embedded Rat Pancreas stained with CELA3B Antibody (CELA3B/1257).



Formalin-fixed, paraffin-embedded Mouse Pancreas stained with CELA3B Antibody (CELA3B/1257).

RELATED PRODUCTS:

- Chymotrypsin, Human Pancreas (**Cat. No. 7538**)
- Elastase Inhibitor (**Cat. No. 1922**)
- Elastase Inhibitor, SPCK (**Cat. No. 1921**)
- Elastase, Human Neutrophil (**Cat. No. 4716**)
- Elastase, Porcine Pancreas (**Cat. No. P1276**)
- Elastase Substrate, Fluorogenic (**Cat. No. 1975**)
- Neutrophil Elastase Inhibitor Screening Kit (Fluorometric) (**Cat. No. K782**)
- Neutrophil Elastase Activity Assay kit (Fluorometric) (**Cat. No. K383**)

FOR RESEARCH USE ONLY! Not to be used on humans.