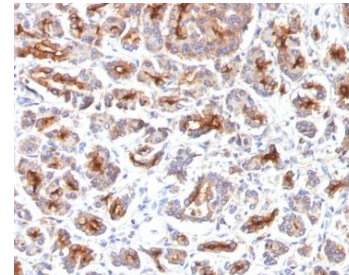


Anti-CFTR Antibody (SPM176)

CATALOG NO:	A1575-100
ALTERNATIVE NAMES:	ABC35; ATP Binding Cassette Superfamily C Member 7 (ABCC7); cAMP-dependent chloride channel; CFTR; CFTR/MRP; Channel conductance-controlling ATPase; Cystic Fibrosis Transmembrane Conductance Regulator; MRP7; TNR CFTR, ABCC7
AMOUNT:	100 µg
IMMUNOGEN:	Recombinant human full-length CFTR
HOST/ISOTYPE:	Mouse / IgG2a
CLONALITY:	Monoclonal
CLONE:	SPM176
MOL WEIGHT:	165-170 kDa
SPECIES REACTIVITY:	Human and Mouse
PURIFICATION:	Protein A/G purified
FORM:	Liquid
FORMULATION:	Supplied in 10 mM PBS with 0.05% BSA & 0.05% azide
STORAGE CONDITIONS:	Shipped at 4°C. Long term storage at -20°C
DESCRIPTION:	This mAb recognizes a protein of 165-170 kDa, identified as cystic fibrosis transmembrane conductance regulator (CFTR). CFTR is composed of two membrane-spanning domains (MSD), two nucleotide-binding domains (NBD), and an R domain. It is structurally similar to multidrug resistance (Mdr1) protein and both are members of the superfamily of ATP-binding cassette (ABC) transporters, also known as traffic ATPases, which are implicated in the movement of various substrates. The CFTR protein is a small conductance adenosine 3', 5'-cyclic monophosphate (cAMP)-activated chloride ion channel found in the apical membranes of epithelia within the pancreas, airway, intestine, bile duct, sweat gland, and male genital ducts. CFTR is a valuable marker of human pancreatic duct cell development and differentiation.
APPLICATION:	WB: 0.5-1 µg/ml IF: 0.5-1 µg/ml

IHC: 0.5-1.0 µg/ml for 30 minutes at RT
(Staining of formalin-fixed tissues is enhanced by boiling tissue sections in 10 mM Tris with 1 mM EDTA, pH 9.0 for 10-20 min followed by cooling at RT for 20 minutes)

Note: This information is only intended as a guide. The optimal dilutions must be determined by the user.



Formalin-fixed, paraffin-embedded Human Pancreas stained with CFTR Antibody (SPM176).

RELATED PRODUCTS:

- CFTR Inhibitor, GlyH-101 (**Cat. No. 2863**)
- CFTR Inhibitor-172 (**Cat. No. 2487**)
- Chloride Colorimetric Assay Kit (**Cat. No. K530**)
- PTC-124 (**Cat. No. 9421**)
- KM-11060 (**Cat. No. B1076**)
- Lonidamine (**Cat. No. B1058**)
- VX-809 (**Cat. No. 2857**)
- VX-661 (**Cat. No. B1268**)

FOR RESEARCH USE ONLY! Not to be used on humans.