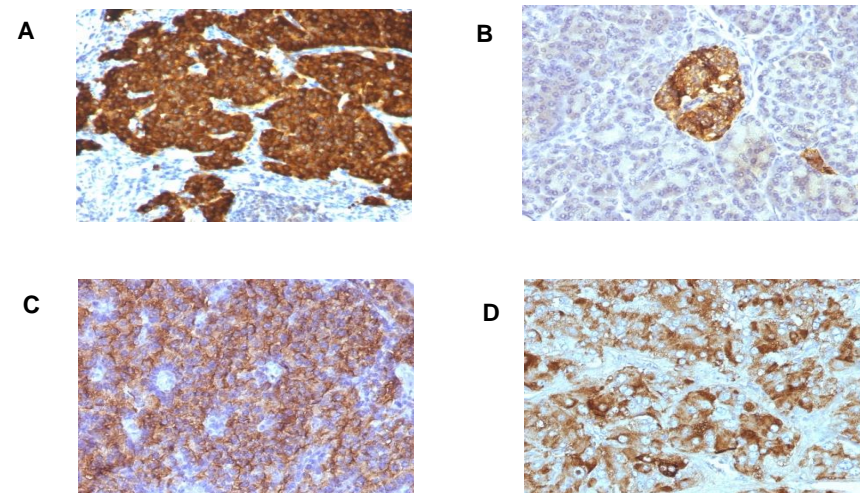


Anti-Chromogranin A / CHGA Antibody (CGA/413 + CHGA/777 + CHGA/798)

CATALOG NO:	A1576-100
ALTERNATIVE NAMES:	Beta-Granin; CGA; CHGA; Chromogranin A Parathyroid Secretory Protein 1; ER-37; Pancreastatin; Parastatin; Parathyroid Secretory Protein 1; Pituitary Secretory Protein I; SP-I; Vasostatin I or II
AMOUNT:	100 µg
IMMUNOGEN:	Recombinant human chromogranin A protein
HOST/ISOTYPE:	Mouse / IgG's
CLONALITY:	Monoclonal
CLONE:	CGA/413 + CHGA/777 + CHGA/798
MOL WEIGHT:	68-75 kDa
SPECIES REACTIVITY:	Human, Monkey, Pig, Mouse and Rat
PURIFICATION:	Protein A/G purified
FORM:	Liquid
FORMULATION:	Supplied in 10 mM PBS with 0.05% BSA & 0.05% azide
STORAGE CONDITIONS:	Shipped at 4°C. Long term storage at -20°C
DESCRIPTION:	Chromogranin A is present in neuroendocrine cells throughout the body, including the neuroendocrine cells of the large and small intestine, adrenal medulla and pancreatic islets. It is an excellent marker for carcinoid tumors, pheochromocytomas, paragangliomas, and other neuroendocrine tumors. Co-expression of chromogranin A and neuron specific enolase (NSE) is common in neuroendocrine neoplasms. Reportedly, co-expression of certain keratins and chromogranin indicates neuroendocrine lineage. The presence of strong anti-chromogranin staining and absence of anti-keratin staining should raise the possibility of paraganglioma. The co-expression of chromogranin and NSE is typical of neuroendocrine neoplasms. Most pituitary adenomas and prolactinomas readily express chromogranin.
APPLICATION:	FC: 0.5-1 µg/1X10 ⁶ cells in 0.1 ml

IF: 0.5-1 µg/ml
 IHC: 0.25-0.5 µg/ml for 30 minutes at RT
 (Staining of formalin-fixed tissues requires boiling tissue sections in 10 mM citrate buffer, pH 6.0, for 10-20 min followed by cooling at RT for 20 minutes)

Note: This information is only intended as a guide. The optimal dilutions must be determined by the user.



Formalin-fixed, paraffin-embedded (A) Pheochromocytoma, (B) Pancreas, (C) Parathyroid, (D) Adrenal Gland stained with Chromogranin A Antibody (CGA/413+ CHGA/777+ CHGA/798)

RELATED PRODUCTS:

- Chromogranin A (CgA) ELISA Kit (Cat. No. K4241)
- Human Recombinant Neuron-Specific Enolase (NSE) (Cat. No. 6362)

FOR RESEARCH USE ONLY! Not to be used on humans.