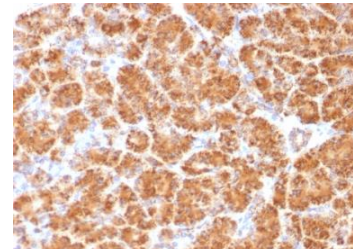


## Anti-Clathrin Antibody (CLC/1421)

<b>CATALOG NO:</b>	A1577-100
<b>ALTERNATIVE NAMES:</b>	Clathrin light chain A; Clathrin light chain B; Clathrin light chain LCA; Clathrin light chain LCB; Clathrin light polypeptide A; Clathrin light polypeptide B; Clathrin, light polypeptide (Lca); Clathrin, light polypeptide (Lcb); CLTA; CLTB
<b>AMOUNT:</b>	100 µg
<b>IMMUNOGEN:</b>	Purified recombinant N-terminal fragment of human Clathrin Light Chain
<b>HOST/ISOTYPE:</b>	Mouse / IgG2b, kappa
<b>CLONALITY:</b>	Monoclonal
<b>CLONE:</b>	CLC/1421
<b>MOL WEIGHT:</b>	31-44 kDa
<b>SPECIES REACTIVITY:</b>	Human
<b>PURIFICATION:</b>	Protein A/G purified
<b>FORM:</b>	Liquid
<b>FORMULATION:</b>	Supplied in 10 mM PBS with 0.05% BSA & 0.05% azide
<b>STORAGE CONDITIONS:</b>	Shipped at 4°C. Long term storage at -20°C
<b>DESCRIPTION:</b>	This antibody recognizes proteins of 31-44 kDa, which are identified as Clathrin Light Chains (both A & B). Clathrin is composed of three heavy chains and three light chains, which associate non-covalently to form a triskelion structure. Clathrin light chain regulates the self-assembly of triskelions onto intracellular membranes. Clathrin light chain subunits (LCA and LCB) contribute to regulation of coated vesicle formation to sort proteins during receptor-mediated endocytosis and organelle biogenesis. LCA and LCB are encoded by two discrete genes. They share only 60% homology, and have certain features in common. Both LCA and LCB undergo alternative mRNA splicing, which results in the generation of tissue-specific isoforms.
<b>APPLICATION:</b>	FC: 0.5-1 µg/1X10 <sup>6</sup> cells IF: 1-2 µg/ml

IHC: 0.5-1 µg/ml for 30 minutes at RT  
(Staining of formalin-fixed tissues requires boiling tissue sections in 10 mM Citrate Buffer, pH 6.0, for 10-20 min followed by cooling at RT for 20 minutes)

**Note: This information is only intended as a guide. The optimal dilutions must be determined by the user.**



**Formalin-fixed, paraffin-embedded Human Pancreas stained with Clathrin, LC Antibody (CLC/1421).**

### RELATED PRODUCTS:

- AAK1 Antibody (Cat. No. 3810)
- Human CellExp™ IL-17A, Human Recombinant (Cat. No. 6468)

**FOR RESEARCH USE ONLY! Not to be used on humans.**