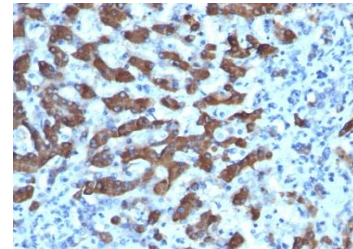


Anti-CPS1 Antibody (CPS1/1022)

CATALOG NO:	A1579-100
ALTERNATIVE NAMES:	Carbamoyl-phosphate synthetase 1 (CPS1); Carbamoylphosphate synthetase 1; CPSase 1; CPSASE1
AMOUNT:	100 µg
IMMUNOGEN:	Recombinant human CPS1 protein
HOST/ISOTYPE:	Mouse / IgG1
CLONALITY:	Monoclonal
CLONE:	CPS1/1022
MOL WEIGHT:	~165 kDa
SPECIES REACTIVITY:	Human, Dog
PURIFICATION:	Protein A/G purified
FORM:	Liquid
FORMULATION:	Supplied in 10 mM PBS with 0.05% BSA & 0.05% azide
STORAGE CONDITIONS:	Shipped at 4°C. Long term storage at -20°C
DESCRIPTION:	<p>This mAb recognizes a protein of 165 kDa, identified as carbamoyl phosphate synthetase 1 (CPS1). This mitochondrial enzyme catalyzes synthesis of carbamoyl phosphate from ammonia and bicarbonate. This reaction is the first committed step of the urea cycle, which is important in the removal of excess urea from cells. Deficiency of CPS1 is an autosomal recessive disorder that causes hyperammonemia. CPS1 is a hepatocyte specific protein that localizes to the mitochondria of hepatocytes. It is a sensitive marker for distinguishing hepatocellular carcinomas (HCC) from other metastatic carcinomas as well as cholangio-carcinomas. HCC occurs primarily in the stomach, but they are also found in many other organs. CPS1 may also be a useful marker for intestinal metaplasia. Reportedly, strong expression of CPS1 correlates with smaller tumor size and longer patient survival. Occasionally, CPS1 is also found in gastric carcinomas as well as in a few other non-hepatic tumors.</p>
APPLICATION:	IF: 0.5-1.0 µg/ml

IHC: 0.25-0.5 µg/ml for 30 minutes at RT
 (Staining of formalin-fixed tissues requires boiling tissue sections in 10 mM Tris with 1 mM EDTA, pH 9.0, for 10-20 min followed by cooling at RT for 20 minutes)

Note: This information is only intended as a guide. The optimal dilutions must be determined by the user.



Formalin-fixed, paraffin-embedded human Hepatocellular Carcinoma stained with CPS1 Antibody (CPS1/1022).

RELATED PRODUCTS:

- Anti-VPS54 Antibody (Cat. No. A1200)
- Anti-AFP Antibody (1D9H5) (Cat. No. A1353)
- Anti-AFP Antibody (2E1C10) (Cat. No. A1354)
- SIRT5 (GST-tagged), Human recombinant (Cat. No. 7674)

FOR RESEARCH USE ONLY! Not to be used on humans.