

Anti-Lamin B Antibody

CATALOG NO:	A1580-100
ALTERNATIVE NAMES:	ADLD, lamin B1, Lamin-B1, LMN, LMN2, LMNB, LmnB1
AMOUNT:	100 µg
IMMUNOGEN:	Synthetic peptide derived from human Lamin B
HOST/ISOTYPE:	Rabbit IgG
CLONALITY:	Polyclonal
SPECIES REACTIVITY:	Human, Mouse, Rat
PURIFICATION:	Immunogen affinity purified
FORM:	Liquid
FORMULATION:	Supplied in phosphate buffered saline, pH 7.4, 150 mM NaCl, 0.02% sodium azide and 50% glycerol
STORAGE CONDITIONS:	Shipped at 4°C. For long term storage store at -20°C in small aliquots to prevent freeze-thaw cycles
DESCRIPTION:	Lamins are components of the nuclear lamina, a fibrous layer on the nucleoplasmic side of the inner nuclear membrane, which is thought to provide a framework for the nuclear envelope and may also interact with chromatin.
APPLICATION:	WB 1:500-1:2000 IHC 1:50-1:200 IF 1:200 ELISA (peptide) 1:20000-1:40000

Note: This information is only intended as a guide. The optimal dilutions must be determined by the user.

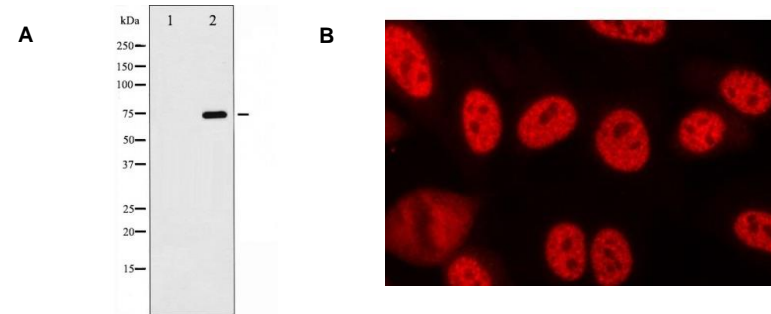


Fig. A. Western blot analysis of Lamin B expression in COLO cells

Fig. B. Formalin-fixed, LoVo cells stained with Lamin B Antibody

RELATED PRODUCTS:

- AIF Antibody (**Cat. No. 3202**)
- Anti-PARP Antibody (2B6) (**Cat. No. A1109**)
- PARP Antibody (Clone 10H) (**Cat. No. 3000**)
- PARP Antibody (Clone 839120) (**Cat. No. 6659**)
- PARP (Cleaved) Antibody (**Cat. No. 3140**)
- PARP (Cleaved) Antibody (**Cat. No. 3141**)

FOR RESEARCH USE ONLY! Not to be used on humans.