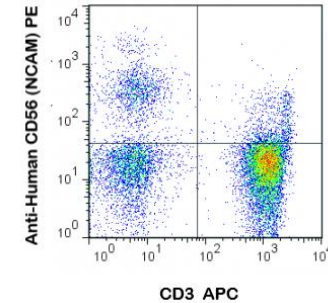


Anti-Human CD56 PE Antibody (MY31)

CATALOG NO:	A1586-25 25 tests A1586-100 100 tests
ALTERNATIVE NAMES:	Neural cell adhesion molecule 1, N-CAM-1, NCAM-1, CD_antigen: CD56
FORMAT/CONJUGATE:	PE
HOST/ISOTYPE:	Mouse IgG1, kappa
CLONALITY:	Monoclonal
CLONE:	MY31
SPECIES REACTIVITY:	Human
PURIFICATION:	Affinity chromatography. Unreacted dye was removed from the product.
FORM:	Liquid
FORMULATION:	Phosphate-buffered aqueous solution, ≤0.09% Sodium azide, may contain carrier protein/stabilizer, pH7.2.
STORAGE CONDITIONS:	The product should be stored undiluted at 4°C and should be protected from prolonged exposure to light. Do not freeze
DESCRIPTION:	The product should be stored undiluted at 4°C and should be protected from prolonged exposure to light. Do not freeze. The monoclonal antibody was purified utilizing affinity chromatography and unreacted dye was removed from the product.
APPLICATION:	Flow Cytometry (Cell Surface): 5µl (1 ug) /1x10 ⁶ cells per test. A test is the amount of antibody required to stain a cell sample in the final volume of 100 µL.

Note: This information is only intended as a guide. The optimal dilutions must be determined by the user.

Laser: Blue (488nm)
Peak Emission: 578nm
Peak Excitation: 496nm
Filter: 585/40
Brightness (1=dim, 5=brightest): 5



Human peripheral blood lymphocytes were stained with PE MY31 and APC UCHT1.

RELATED PRODUCTS:

- Anti-CD56 / NCAM1 Antibody (Clone SPM128) (**Cat. No. A1553**)
- Human CellExp™ NCAM-1/CD56, human recombinant (**Cat. No. P1016**)
- CD8 FITC Monoclonal Antibody (Clone OKT-8) (**Cat. No. 6954**)
- Anti-CD8A Antibody (C8/468) (**Cat. No. A1570**)
- CD8B, human recombinant (**Cat. No. 7320**)
- Human CellExp™ CD8b, Human Recombinant (**Cat. No. P1244**)
- QuickDetect™ CD8 (Human) ELISA Kit (**Cat. No. K4418**)

FOR RESEARCH USE ONLY! Not to be used on humans.