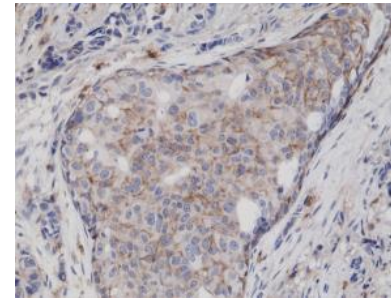


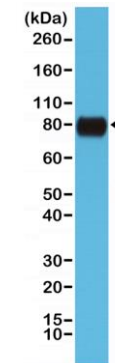
Anti-CD44 Rabbit Monoclonal Antibody

CATALOG NO:	A1592-50
ALTERNATIVE NAMES:	CD44, homing cell adhesion molecule, cell adhesion molecule, LHR, MDU2, MDU3, MIC4
AMOUNT:	50 µl
CLONE:	RM264
IMMUNOGEN:	A peptide corresponding to the extracellular domain of human CD44
HOST/ISOTYPE:	Rabbit IgG
SPECIES REACTIVITY:	Human
PURIFICATION:	Protein A affinity purified from an animal origin-free culture supernatant
FORM:	Liquid
FORMULATION:	In 50% Glycerol/PBS with 1% BSA and 0.09% sodium azide
SPECIFICITY:	This antibody reacts to the extracellular domain of human CD44.
STORAGE CONDITIONS:	For long term storage store at -20°C in small aliquots to prevent freeze-thaw cycles
DESCRIPTION:	<p>The protein encoded by this gene is a cell-surface glycoprotein involved in cell-cell interactions, cell adhesion and migration. It is a receptor for hyaluronic acid (HA) and can also interact with other ligands, such as osteopontin, collagens, and matrix metalloproteinases (MMPs). This protein participates in a wide variety of cellular functions including lymphocyte activation, recirculation and homing, hematopoiesis, and tumor metastasis. Transcripts for this gene undergo complex alternative splicing that results in many functionally distinct isoforms, however, the full length nature of some of these variants has not been determined. Alternative splicing is the basis for the structural and functional diversity of this protein, and may be related to tumor metastasis.</p>
APPLICATION:	WB: 1:1000-1:2000 IHC: 1:1000-1:5000

Note: This information is only intended as a guide. The optimal dilutions must be determined by the user.



Immunohistochemical staining of formalin fixed and paraffin embedded human breast cancer tissue sections using Anti-CD44 Rabbit Monoclonal Antibody (Clone RM264) at a 1:5000 dilution.



Western Blot of HeLa cells lysates using Anti-CD44 Rabbit Monoclonal Antibody (Clone RM264) at a 1:1000 dilution.

RELATED PRODUCTS:

- Anti-human CD44 antibody (**Cat. No. A1505**)
- Anti-CD44 Antibody (Hermes-3) (**Cat. No. A1078**)
- Anti-CD44 / HCAM Std. Antibody (HCAM/918) (**Cat. No. A1525**)
- CD44 (Human) ELISA Kit (**Cat. No. K4178**)
- HCAM Antibody (**Cat. No. 3393**)
- Human CellExp™ LYVE-1, mouse recombinant (**Cat. No. P1017**)

FOR RESEARCH USE ONLY! Not to be used on humans.