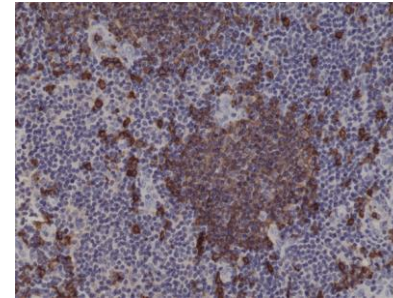


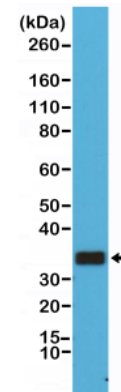
Anti-CD20 Rabbit Monoclonal Antibody

CATALOG NO:	A1594-50
ALTERNATIVE NAMES:	B-lymphocyte antigen CD20, B-lymphocyte surface antigen B1, Bp35, Leukocyte surface antigen Leu-16, Membrane-spanning 4-domains subfamily A member
AMOUNT:	50 µl
CLONE:	RM272
IMMUNOGEN:	A peptide corresponding to the C-terminus of human CD20
HOST/ISOTYPE:	Rabbit IgG
SPECIES REACTIVITY:	Human
PURIFICATION:	Protein A affinity purified from an animal origin-free culture supernatant
FORM:	Liquid
FORMULATION:	50% Glycerol/PBS with 1% BSA and 0.09% sodium azide
SPECIFICITY:	This antibody reacts to the cytoplasmic domain of human CD20.
STORAGE CONDITIONS:	For long term storage store at -20°C in small aliquots to prevent freeze-thaw cycles
DESCRIPTION:	<p>It is a non-Ig differentiation antigen of B-cells and its expression is restricted to normal and neoplastic B-cells, being absent from all other leukocytes and tissues. CD20 is expressed by pre B-cells and persists during all stages of B-cell maturation but is lost upon terminal differentiation into plasma cells. This mAb can be used for immunophenotyping of leukemia and malignant cells, B lymphocyte detection in peripheral blood and B cell localization in tissues. It reacts with the majority of B-cells present in peripheral blood and lymphoid tissues and their derived lymphomas. In lymphoid tissue, germinal center blasts and B-immunoblasts are particularly reactive. It is a reliable antibody for ascribing a B-cell phenotype in known lymphoid tissues. Rarely, CD20-positive T-cell lymphomas have been reported. Reactivity has also been noted with Reed-Sternberg cells in cases of Hodgkin s disease, particularly of lymphocyte predominant type.</p>
APPLICATION:	Western Blot: 1:1000-1:2000 IHC: 1:500-1:1000

Note: This information is only intended as a guide. The optimal dilutions must be determined by the user.



Immunohistochemical staining of formalin fixed and paraffin embedded human tonsil tissue sections using Anti-CD20 Rabbit Monoclonal Antibody (Clone RM272) at a 1:1000 dilution.



Western Blot of Raji cell lysates using Anti-CD20 Rabbit Monoclonal Antibody (Clone RM272) at a 1:1000 dilution

RELATED PRODUCTS:

- Anti-CD20 / MS4A1 Antibody (SPM618) (Cat. No. A1480)
- Anti-CD20 (Rituximab), Chimeric Antibody (Cat. No. A1049)
- Anti-CD20 Antibody (2F4) (Cat. No. A1385)
- CD20 / MS4A1 (Human) ELISA Kit (Cat. No. E4548)

FOR RESEARCH USE ONLY! Not to be used on humans.