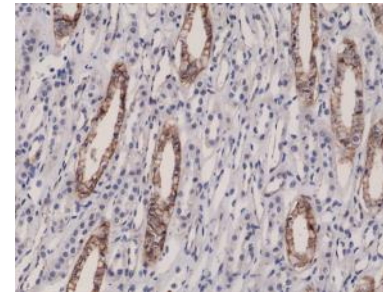


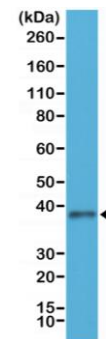
Anti-Junctional Adhesion Molecule 1 Rabbit Monoclonal Antibody

CATALOG NO:	A1596-50
ALTERNATIVE NAMES:	Junctional adhesion molecule 1, JAM-1, JCAM, F11R, CD321
AMOUNT:	50 µl
CLONE:	RM275
IMMUNOGEN:	A peptide corresponding to the N-terminus of human human JAM1 (Junctional adhesion molecule 1)
HOST/ISOTYPE:	Rabbit IgG
SPECIES REACTIVITY:	Human
PURIFICATION:	Protein A affinity purified from an animal origin-free culture supernatant
FORM:	Liquid
FORMULATION:	50% Glycerol/PBS with 1% BSA and 0.09% sodium azide
SPECIFICITY:	This antibody reacts to human JAM1 (Junctional adhesion molecule 1).
STORAGE CONDITIONS:	For long term storage store at -20°C in small aliquots to prevent freeze-thaw cycles
DESCRIPTION:	Seems to play a role in epithelial tight junction formation. Appears early in primordial forms of cell junctions and recruits PARD3. The association of the PARD6-PARD3 complex may prevent the interaction of PARD3 with JAM1, thereby preventing tight junction assembly. Plays a role in regulating monocyte transmigration involved in integrity of epithelial barrier. Ligand for integrin alpha-L/beta-2 involved in memory T-cell and neutrophil transmigration. Involved in platelet activation.
APPLICATION:	WB: 1:250-1:1000 IHC: 1:2000-1:10000

Note: This information is only intended as a guide. The optimal dilutions must be determined by the user.



Immunohistochemical staining of formalin fixed and paraffin embedded human kidney tissue sections using Anti-JAM1 Rabbit Monoclonal Antibody (Clone RM275) at a 1:10000 dilution



Western Blot of HEK293 cells lysates using Anti-JAM1 Rabbit Monoclonal Antibody (Clone RM275) at a 1:250 dilution.

RELATED PRODUCTS:

- ACAT1 Antibody (Cat. No. 3245)
- Adiponectin Antibody (Cat. No. 5902)
- ApoLipoprotein B Antibody (Cat. No. 3661)
- C-Peptide Antibody (Cat. No. 3277)

FOR RESEARCH USE ONLY! Not to be used on humans.