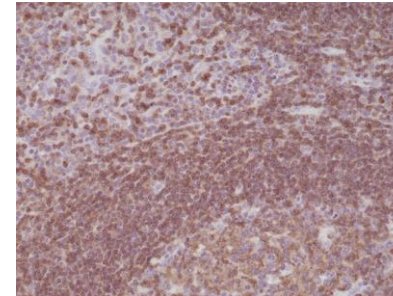


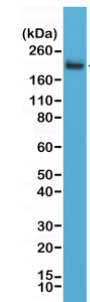
Anti-CD45 Rabbit Monoclonal Antibody

CATALOG NO:	A1597-50
ALTERNATIVE NAMES:	B220, CD45R, GP180, Leukocyte common antigen (LCA), Loc, Ly5, Lyt-4, Protein tyrosine phosphatase receptor type C (PTPRC), Receptor-type tyrosine-protein phosphatase C, T200 glycoprotein
AMOUNT:	50 µl
CLONE:	RM291
IMMUNOGEN:	A peptide corresponding to the C-terminus of human CD45 (Receptor-type tyrosine-protein phosphatase C)
HOST/ISOTYPE:	Rabbit IgG
SPECIES REACTIVITY:	Human
PURIFICATION:	Protein A affinity purified from an animal origin-free culture supernatant
FORM:	Liquid
FORMULATION:	50% Glycerol/PBS with 1% BSA and 0.09% sodium azide
SPECIFICITY:	This antibody reacts to human CD45 (Receptor-type tyrosine-protein phosphatase C).
STORAGE CONDITIONS:	For long term storage store at -20°C in small aliquots to prevent freeze-thaw cycles
DESCRIPTION:	CD45R, also designated CD45 and PTPRC, has been identified as a transmembrane glycoprotein, broadly expressed among hematopoietic cells. Multiple isoforms of CD45R are distributed throughout the immune system according to cell type. These isoforms arise because of alternative splicing of exons 4, 5, and 6. The corresponding protein domains are characterized by the binding of monoclonal antibodies specific for CD45RA (exon 4), CD45RB (exon 5), CD45RC (exon 6) and CD45RO (exons 4 to 6 spliced out). The variation in these isoforms is localized to the extracellular domain of CD45R, while the intracellular domain is conserved. CD45R functions as a phospho-tyrosine phosphatase. Antibody to CD45 is useful in differential diagnosis of lymphoid tumors from non-hematopoietic undifferentiated neoplasms.
APPLICATION:	WB: 1:1000-1:2000 IHC: 1:100-1:200

Note: This information is only intended as a guide. The optimal dilutions must be determined by the user.



Immunohistochemical staining of formalin fixed and paraffin embedded human tonsil tissue sections using Anti-CD45 Rabbit Monoclonal Antibody



Western Blot of Jurkat cell lysates using anti-CD45 rabbit monoclonal antibody (clone RM291) at a 1:2000 dilution.

RELATED PRODUCTS:

- Anti-CD45 / LCA Antibody (Clone F10-89-4) (Cat. No. A1529)
- Anti-CD45 / LCA Antibody (Clone 135-4C5) (Cat. No. A1540)
- Human CellExp™ CD45, human recombinant (Cat. No. P1015)
- Anti-CD45RB Antibody (Clone BRA-11(same as BRA-11G)) (Cat. No. A1541)

FOR RESEARCH USE ONLY! Not to be used on humans.