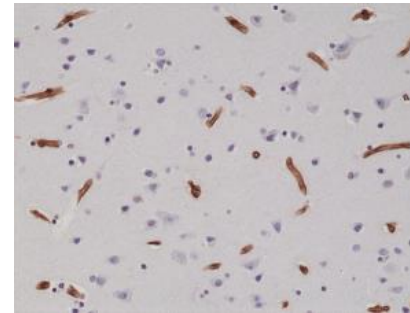


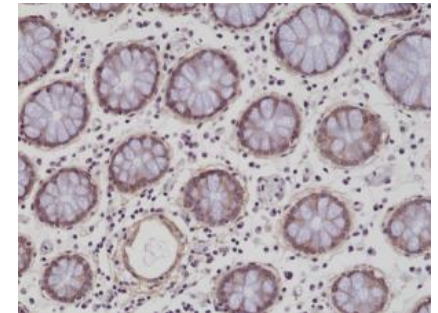
Anti-Integrin beta-1 Rabbit Monoclonal Antibody

| | |
|----------------------------|---|
| CATALOG NO: | A1598-50 |
| ALTERNATIVE NAMES: | Integrin beta-1, Fibronectin receptor subunit beta, GPIIA, CD29, FNRB, MDF2, MSK12 |
| AMOUNT: | 50 µl |
| CLONE: | RM285 |
| IMMUNOGEN: | A peptide corresponding to the residues in human CD29 (Integrin beta-1) |
| HOST/ISOTYPE: | Rabbit IgG |
| SPECIES REACTIVITY: | Human |
| PURIFICATION: | Protein A affinity purified from an animal origin-free culture supernatant |
| FORM: | Liquid |
| FORMULATION: | 50% Glycerol/PBS with 1% BSA and 0.09% sodium azide |
| SPECIFICITY: | This antibody reacts to reacts to human CD29 (Integrin beta-1). |
| STORAGE CONDITIONS: | For long term storage store at -20°C in small aliquots to prevent freeze-thaw cycles |
| DESCRIPTION: | Integrin alpha-V/beta-1 is a receptor for vitronectin. Beta-1 integrins recognize the sequence R-G-D in a wide array of ligands. Isoform 2 interferes with isoform 1 resulting in a dominant negative effect on cell adhesion and migration (in vitro). When associated with alpha-7/beta-1 integrin, regulates cell adhesion and laminin matrix deposition. Involved in promoting endothelial cell motility and angiogenesis. Involved in osteoblast compaction through the fibronectin fibrillogenesis cell-mediated matrix assembly process and the formation of mineralized bone nodules. May be involved in up-regulation of the activity of kinases such as PKC via binding to KRT1 |
| APPLICATION: | Western Blot: 1:2000-1:4000 IHC: 1:100-1:200 |

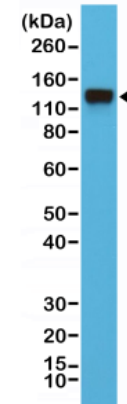
Note: This information is only intended as a guide. The optimal dilutions must be determined by the user.



Immunohistochemical staining of formalin fixed and paraffin embedded human brain tissue sections using anti-CD29 rabbit monoclonal antibody (clone RM285) at a 1:200 dilution.



Immunohistochemical staining of formalin fixed and paraffin embedded human colon tissue sections using anti-CD29 rabbit monoclonal antibody (clone RM285) at a 1:200 dilution.



Western Blot of HeLa cells lysates using Anti-CD29 Rabbit Monoclonal Antibody (Clone RM285) at a 1:4000 dilution.

RELATED PRODUCTS:

- Human CellExp™ Integrin beta-5 Extracellular Domain (ED), Human Recombinant (**Cat. No. P1172**)
- Anti-CD61/ Integrin beta-3 / Platelet Glycoprotein IIIa Antibody (CloneY2/51) (**Cat. No. 1556**)
- Anti-alpha 5 beta 1 Integrin (Volociximab), Human IgG4 Antibody (**Cat. No. A1092**)
- Human CellExp™ Integrin alpha V beta 8, Human recombinant (**Cat. No. P1122**)

FOR RESEARCH USE ONLY! Not to be used on humans.