

Anti-LC3B Rabbit Monoclonal Antibody

CATALOG NO: A1599-50

ALTERNATIVE NAMES: MAP1LC3B; MAP1ALC3; Microtubule-associated proteins 1A/1B light chain 3B; Autophagy-related protein LC3 B; Autophagy-related ubiquitin-like modifier LC3 B; MAP1 light chain 3-like protein 2; MAP1A/MAP1B light chain 3 B; Microtubule-associated protein 1 light chain 3 beta.

AMOUNT: 50 µl

CLONE: RM293

IMMUNOGEN: A peptide corresponding to the N-terminus of human LC3B

HOST/ISOTYPE: Rabbit IgG

SPECIES REACTIVITY: Human

PURIFICATION: Protein A affinity purified from an animal origin-free culture supernatant

FORM: Liquid

FORMULATION: 50% Glycerol/PBS with 1% BSA and 0.09% sodium azide

SPECIFICITY: This antibody reacts to human LC3B (Autophagy-related protein LC3 B) (Microtubule-associated proteins 1A/1B light chain 3B).

STORAGE CONDITIONS: For long term storage store at -20°C in small aliquots to prevent freeze-thaw cycles

DESCRIPTION: Autophagy is an alternative process of proteasomal degradation for some long-lived proteins or organelles. Alterations in the autophagic-lysosomal compartment have been linked to neuronal death in many neurodegenerative disorders as well as in transmissible neuronal pathologies (prion diseases). Genetic studies in yeast have shown that Autophagy-defective Gene-8 (Atg-8) represents a specific marker for autophagy. Among the four families of mammalian Atg8-related proteins only LC3 (Microtubule-associated Protein1 Light Chain 3) is expressed at sufficient high levels and efficiently recruited to autophagic vesicles in cells and tissues. During autophagy the cytoplasmic form, LC3-I is processed and recruited to autophagosomes, where LC3-II is generated by site specific proteolysis near to the C-terminus.

APPLICATION: WB: 1:100-1:200
IHC: 1:100-1:200
ICC: 1: 100-1:200
Note: This information is only intended as a guide. The optimal dilutions must be determined by the user.

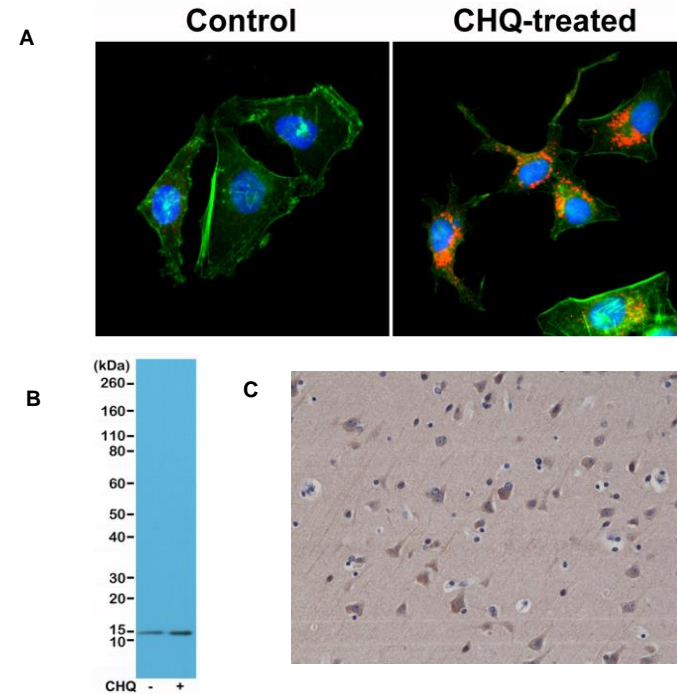


Fig. A. ICC staining of HeLa cells untreated or treated with chloroquine (CHQ), using anti-LC3B rabbit monoclonal Antibody Clone RM293 (red) at a 1:200 dilution. Actin filaments have been labeled with fluorescein phalloidin (green), and nucleus labeled with DAPI (blue).

Fig. B. Western Blot of cell lysates of HeLa untreated or treated with chloroquine (CHQ), using anti-LC3B rabbit monoclonal antibody (clone RM293) at a 1:200 dilution.

Fig. C. IHC staining of formalin fixed and paraffin embedded human brain tissue sections using anti-LC3B rabbit monoclonal antibody (clone RM293) at a 1:200 dilution

RELATED PRODUCTS:

- LC3B (Cleaved) Antibody (Cat. No. 6949)
- LC3 (APG8A) Antibody (Cat. No. 3235)
- LC3 (APG8B) (NT) Antibody (Cat. No. 6946)
- LC3A cleaved Antibody (Cat. No. 6947)
- LC3 (APG8A) (NT) Antibody (Cat. No. 6948)
- LC3 (APG8C) Antibody (Cat. No. 6950)

FOR RESEARCH USE ONLY! Not to be used on humans.

