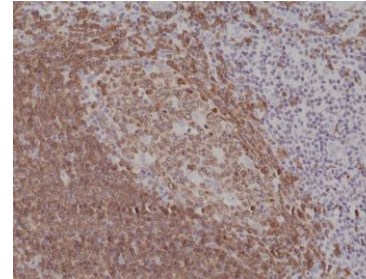


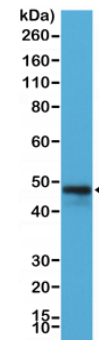
Anti-CD79a Rabbit Monoclonal Antibody

CATALOG NO:	A1602-50
ALTERNATIVE NAMES:	B lymphocyte-specific MB1 protein, B-cell antigen receptor complex-associated protein alpha chain, CD79a molecule immunoglobulin associated alpha, Ig-alpha, IGA, IgM-alpha, Immunoglobulin-associated alpha, Ly54, MB-1 membrane glycoprotein, Membrane-bound immunoglobulin-associated protein, Surface IgM-associated protein
AMOUNT:	50 µl
CLONE:	RM297
IMMUNOGEN:	A peptide corresponding to the C-terminus of human CD79a
HOST/ISOTYPE:	Rabbit IgG
SPECIES REACTIVITY:	Human
PURIFICATION:	Protein A affinity purified from an animal origin-free culture supernatant
FORM:	Liquid
FORMULATION:	50% Glycerol/PBS with 1% BSA and 0.09% sodium azide
SPECIFICITY:	This antibody reacts to reacts to human CD79a
STORAGE CONDITIONS:	For long term storage store at -20°C in small aliquots to prevent freeze-thaw cycles
DESCRIPTION:	A disulphide-linked heterodimer, consisting of mb-1 (or CD79a) and B29 (or CD79b) polypeptides, is non-covalently associated with membrane-bound immunoglobulins on B cells. This complex of mb-1 and B29 polypeptides and immunoglobulin constitute the B cell Ag receptor. CD79a first appears at pre B cell stage, early in maturation, and persists until the plasma cell stage where it is found as an intracellular component. CD79a is found in the majority of acute leukemias of precursor B cell type, in B cell lines, B cell lymphomas, and in some myelomas. It is not present in myeloid or T cell lines. Anti-CD79a is generally used to complement anti-CD20 especially for mature B-cell lymphomas after treatment with Rituximab (anti-CD20). This antibody will stain many of the same lymphomas as anti-CD20, but also is more likely to stain B-lymphoblastic lymphoma/leukemia than is anti-CD20. Anti-CD79a also stains more cases of plasma cell myeloma and occasionally some types of endothelial cells as well.
APPLICATION:	Western Blot: 1:100-1:200 IHC: 1:100-1:200

Note: This information is only intended as a guide. The optimal dilutions must be determined by the user.



Immunohistochemical staining of formalin fixed and paraffin embedded human tonsil tissue section using anti-CD79a rabbit monoclonal antibody (Clone RM297) at a 1:200 dilution.



Western Blot of Raji cells lysate using anti-CD79a rabbit monoclonal antibody (Clone RM297) at a 1:200 dilution.

RELATED PRODUCTS:

- Anti-CD79a Antibody (Clone HM57) (Cat. No. A1568)
- CD79B, human recombinant (Cat. No. 7318)

FOR RESEARCH USE ONLY! Not to be used on humans.

