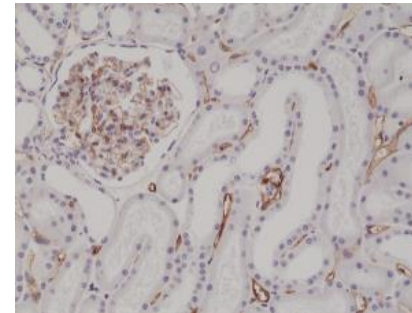


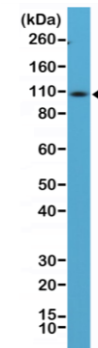
Anti-CD34 Rabbit Monoclonal Antibody

CATALOG NO:	A1603-50
ALTERNATIVE NAMES:	CD34; Hematopoietic progenitor cell antigen CD34, Hematopoietic Progenitor Cell Antigen, HPCA1, Mucosialin
AMOUNT:	50 µl
CLONE:	RM300
IMMUNOGEN:	A peptide corresponding to the C-terminus of human CD34
HOST/ISOTYPE:	Rabbit IgG
SPECIES REACTIVITY:	Human
PURIFICATION:	Protein A affinity purified from an animal origin free culture supernatant
FORM:	Liquid
FORMULATION:	50% Glycerol/PBS with 1% BSA and 0.09% sodium azide
SPECIFICITY:	This antibody reacts to human, mouse and rat CD34.
STORAGE CONDITIONS:	For long term storage store at -20°C in small aliquots to prevent freeze-thaw cycles
DESCRIPTION:	On the basis of differential sensitivity to degradation by specific enzymes, epitopes of monoclonal antibodies to CD34 are classified into a three main categories, class I, class II and class III. It is a class II antibody whose epitope is resistant to neuraminidase but sensitive to glycoprotease and chymopapain. CD34 expression is a hallmark for identifying pluripotent hematopoietic stem or progenitor cells. Its expression is gradually lost as lineage committed progenitors differentiate. CD34 is a marker of choice for staining blasts in acute myeloid leukemia. In addition, CD34 is expressed by soft tissue tumors, such as solitary fibrous tumor and gastrointestinal stromal tumor. Its expression is also found in vascular endothelium. Additionally, it appears that proliferating endothelial cells express this molecule more than the non-proliferating endothelial cells. Anti-CD34 labels > 85% of angiosarcoma and Kaposi's sarcoma, but with a lower specificity.
APPLICATION:	WB: 1:100-1:200 IHC: 1:100-1:200

Note: This information is only intended as a guide. The optimal dilutions must be determined by the user.



Immunohistochemical staining of formalin fixed and paraffin embedded human kidney tissue section using anti-CD34 rabbit monoclonal antibody (Clone RM300) at a 1:200 dilution.



Western Blot of mouse spleen tissue lysate using anti-CD34 rabbit monoclonal antibody (Clone RM300) at a 1:100 dilution.

RELATED PRODUCTS:

- CD34 Antibody (Center) (Clone # 132CT29.1.5) (Cat. No. 6796)
- CD34 Antibody (Center) (Cat. No. 6797)
- Anti-CD34 Antibody (QBEnd/10) (Cat. No. A1497)

FOR RESEARCH USE ONLY! Not to be used on humans.