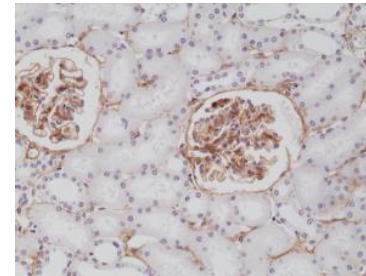


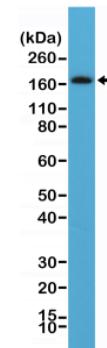
## Anti-CD140b Rabbit Monoclonal Antibody

<b>CATALOG NO:</b>	A1604-50
<b>ALTERNATIVE NAMES:</b>	PDGFRB; PDGFR; PDGFR1; Platelet-derived growth factor receptor beta; Beta platelet-derived growth factor receptor; Beta-type platelet-derived growth factor receptor; CD140 antigen-like family member B; Platelet-derived growth factor receptor 1
<b>AMOUNT:</b>	50 µl
<b>CLONE:</b>	RM303
<b>IMMUNOGEN:</b>	A peptide corresponding to the C-terminus of human CD 140b
<b>HOST/ISOTYPE:</b>	Rabbit IgG
<b>SPECIES REACTIVITY:</b>	Human
<b>PURIFICATION:</b>	Protein A affinity purified from an animal origin free culture supernatant
<b>FORM:</b>	Liquid
<b>FORMULATION:</b>	50% Glycerol/PBS with 1% BSA and 0.09% sodium azide
<b>SPECIFICITY:</b>	This antibody reacts to human, mouse and rat CD34.
<b>STORAGE CONDITIONS:</b>	For long term storage store at -20°C in small aliquots to prevent freeze-thaw cycles
<b>DESCRIPTION:</b>	Platelet-derived growth factor (PDGF) refers to a family of disulphide-bonded dimeric isoforms that are important for growth and survival, and which function in several types of connective tissue cell. There are four members of the platelet-derived growth factor (PDGF) family: PDGF-A, PDGF-B, PDGF-C and PDGF-D (spinal cord-derived growth factor-B or iris-expressed growth factor). Their biological effects are mediated via two tyrosine kinase receptors, PDGFR-α and PDGFR-β. PDGF-mediated signaling is critical for development of many organ systems. PDGF-D has a two-domain structure similar to PDGF-C and is secreted as a disulphide-linked homodimer, PDGF-DD. Upon limited proteolysis, PDGF-DD is activated and becomes a specific agonistic ligand for PDGFR-β. PDGF-D is expressed in fibroblastic adventitial cells, cultured endothelial cells and in a variety of tumor cell lines.
<b>APPLICATION:</b>	WB: 1:250-1:500 IHC: 1:500-1:1000

**Note:** This information is only intended as a guide. The optimal dilutions must be determined by the user.



Immunohistochemical staining of formalin fixed and paraffin embedded human kidney tissue section using anti-CD140b rabbit monoclonal antibody (Clone RM303) at a 1:200 dilution.



Western Blot of human brain tissue lysate using anti-CD140b rabbit monoclonal antibody (Clone RM303) at a 1:100 dilution.

### RELATED PRODUCTS:

- PDGFR Antibody (Clone # 275CT1) (Cat. No. 6787)
- Active PDGFR beta (Cat. No. 7770)
- Phospho-PDGFR beta (Tyr716) Antibody (Cat. No. A1035)
- PDGF-AA, human recombinant (Cat. No. 4482)
- PDGF-AA, murine recombinant (Cat. No. 4483)
- PDGF-AB, human recombinant (Cat. No. 4485)
- PDGF-BB, human recombinant (Cat. No. 4488)
- PDGF-BB, murine recombinant (Cat. No. 4489)

**FOR RESEARCH USE ONLY! Not to be used on humans.**