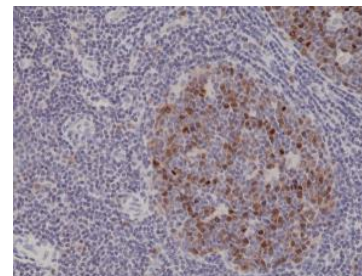


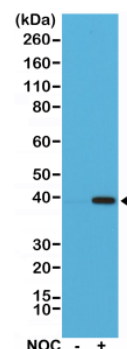
## Anti-Aurora B Rabbit Monoclonal Antibody

<b>CATALOG NO:</b>	A1606-50
<b>ALTERNATIVE NAMES:</b>	AIK2, AIM-1, ARK-2, AurB, AURKB, Aurora-1, Aurora and Ipl1 like midbody associated protein 1, Aurora kinase B, Aurora-B, Aurora-related kinase 2, Aurora/IPL1-related kinase 2, IPL1, Protein phosphatase 1 regulatory subunit 48 (PPP1R48), Serine/threonine-protein kinase 12, Serine/threonine-protein kinase aurora-B, STK1, STK12, STK5
<b>AMOUNT:</b>	50 µl
<b>CLONE:</b>	RM278
<b>IMMUNOGEN:</b>	A peptide corresponding to the C-terminus of human Aurora kinase B
<b>HOST/ISOTYPE:</b>	Rabbit IgG
<b>SPECIES REACTIVITY:</b>	Human
<b>PURIFICATION:</b>	Protein A affinity purified from an animal origin free culture supernatant
<b>FORM:</b>	Liquid
<b>FORMULATION:</b>	50% Glycerol/PBS with 1% BSA and 0.09% sodium azide
<b>SPECIFICITY:</b>	This antibody reacts to human Aurora kinase B.
<b>STORAGE CONDITIONS:</b>	For long term storage store at -20°C in small aliquots to prevent freeze-thaw cycles
<b>DESCRIPTION:</b>	The serine/threonine protein kinase aurora B (Aurora B) is a chromosomal passenger protein critical for accurate chromosome segregation, cytokinesis, protein localization to the centromere and kinetochore, correct microtubule-kinetochore attachment, and regulation of the mitotic checkpoint. Aurora B forms a tight complex with inner centrosome protein and survivin. Inactivation of any of these proteins causes similar defects in chromosome segregation. A significant overexpression of Aurora B has been found in a variety of human tumors including non-small cell lung carcinoma, astrocytoma, seminoma and carcinomas of the colon, prostate, endometrium and thyroid. The expression level of Aurora B is associated with cell proliferation and prognosis in these tumors.
<b>APPLICATION:</b>	WB: 1:1000-1:2000 IHC: 1:200-1:500

**Note:** This information is only intended as a guide. The optimal dilutions must be determined by the user.



Immunohistochemical staining of formalin fixed and paraffin embedded human tonsil tissue sections using Anti-Aurora B Rabbit Monoclonal Antibody (Clone RM278) at a 1:500 dilution.



Western Blot of HeLa cells nontreated (-) or treated (+) with Nocodazole (NOC), using Anti-Aurora B Rabbit Monoclonal Antibody (Clone RM278) at a 1:1000 dilution.

### RELATED PRODUCTS:

- Anti-Aurora B Antibody (AURKB/1521) (Cat. No. A1433)
- Aurora Kinase B Inhibitor (AZD1152-HQPA) (Cat. No. 1583)

**FOR RESEARCH USE ONLY! Not to be used on humans.**