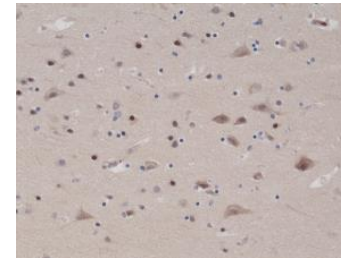


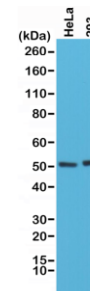
Anti-PTEN Rabbit Monoclonal Antibody

CATALOG NO:	A1607-50
ALTERNATIVE NAMES:	Phosphatidylinositol-3,4,5-trisphosphate 3-phosphatase and dual-specificity protein phosphatase PTEN, Phosphatase and tensin homolog, PTEN, MMAC1, TEP1, BZS, MHAM, PTEN1, 10q23del
AMOUNT:	50 µl
CLONE:	RM265
IMMUNOGEN:	A peptide corresponding to the C-terminus of human PTEN
HOST/ISOTYPE:	Rabbit IgG
SPECIES REACTIVITY:	Human, Mouse
PURIFICATION:	Protein A affinity purified from an animal origin free culture supernatant
FORM:	Liquid
FORMULATION:	50% Glycerol/PBS with 1% BSA and 0.09% sodium azide
SPECIFICITY:	This antibody reacts to human Phosphatidylinositol 3, 4,5-trisphosphate 3-phosphatase and has dual-specificity to protein phosphatase PTEN.
STORAGE CONDITIONS:	For long term storage store at -20°C in small aliquots to prevent freeze-thaw cycles
DESCRIPTION:	PTEN, a tumor suppressor, has been implicated in a large number of human tumors and is conserved from humans to worms. Characterization of PTEN protein showed that it is a phosphatase that acts on proteins and on 3-phosphorylated phosphoinositides, and can therefore modulate signal-transduction pathways that involve lipid second messengers. Recent results indicate that at least part of its role is to regulate the activity of the serine/threonine kinase AKT/PKB, and thus influence cell survival signaling.
APPLICATION:	WB: 1:1000-1:2000 IHC: 1:1000-1:2000

Note: This information is only intended as a guide. The optimal dilutions must be determined by the user.



Immunohistochemical staining of formalin fixed and paraffin embedded human brain tissue sections using Anti-PTEN RM265 at a 1:1000 dilution.



Western Blot of HeLa and 293 cells lysates using Anti-PTEN Rabbit Monoclonal Antibody (Clone RM265) at a 1:1000 dilution

RELATED PRODUCTS:

- PTEN Antibody (Cat. No. 3479)
- PTEN (Human) ELISA Kit (Cat. No. K4193)
- PTEN, human recombinant (Cat. No. 4838)

FOR RESEARCH USE ONLY! Not to be used on humans.