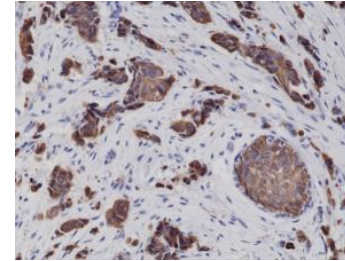


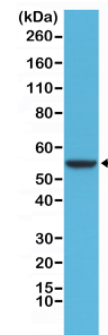
## Anti-Cytokeratin-8 Rabbit Monoclonal Antibody

<b>CATALOG NO:</b>	A1608-50
<b>ALTERNATIVE NAMES:</b>	Keratin, type II cytoskeletal 8, CK-8, Keratin-8, K8, Type-II keratin Kb8, KRT8, CYK8
<b>AMOUNT:</b>	50 µl
<b>CLONE:</b>	RM266
<b>IMMUNOGEN:</b>	A peptide corresponding to the C-terminus of human Cytokeratin-8
<b>HOST/ISOTYPE:</b>	Rabbit IgG
<b>SPECIES REACTIVITY:</b>	Human
<b>PURIFICATION:</b>	Protein A affinity purified from an animal origin free culture supernatant
<b>FORM:</b>	Liquid
<b>FORMULATION:</b>	50% Glycerol/PBS with 1% BSA and 0.09% sodium azide
<b>SPECIFICITY:</b>	This antibody reacts to human CK8 (Cytokeratin-8).
<b>STORAGE CONDITIONS:</b>	For long term storage store at -20°C in small aliquots to prevent freeze-thaw cycles
<b>DESCRIPTION:</b>	Keratin 8 belongs to the type B (basic) subfamily of high molecular weight keratins and exists in combination with keratin 18. Keratin 8 is primarily found in the non-squamous epithelia and is present in majority of adenocarcinomas and ductal carcinomas. It is absent in squamous cell carcinomas. HepatoCellular carcinomas are defined by the use of antibodies that recognize only cytokeratin polypeptides 8 and 18. The recombinant human keratin-8 is expressed in E. coli and purified by proprietary chromatographic techniques.
<b>APPLICATION:</b>	WB: 1:1000-1:2000 IHC: 1:1000-1:2000

**Note:** This information is only intended as a guide. The optimal dilutions must be determined by the user.



Immunohistochemical staining of formalin fixed and paraffin embedded human breast cancer tissue sections using Anti-CK8 Rabbit Monoclonal Antibody (Clone RM266) at a 1:2000 dilution



Western Blot of HeLa cells lysates using Anti-CK8 Rabbit Monoclonal Antibody (Clone RM266) at a 1:1000 dilution

### RELATED PRODUCTS:

- Keratin-8, human recombinant (**Cat. No. 4817**)
- Anti-Cytokeratin 5, Rabbit Monoclonal Antibody (**Cat. No. A1136**)

**FOR RESEARCH USE ONLY! Not to be used on humans.**