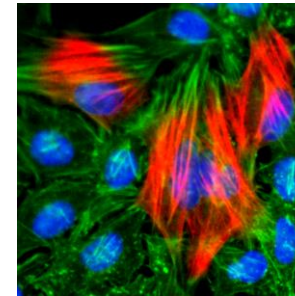


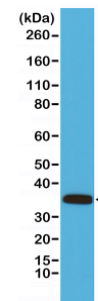
Anti-Calponin-1 Rabbit Monoclonal Antibody

CATALOG NO:	A1609-50
ALTERNATIVE NAMES:	Calponin 1 basic smooth muscle; Calponin H1 smooth muscle; Calponin-1; CNN1; Cnn1; Sm Calp; SMCC
AMOUNT:	50 µl
CLONE:	RM262
IMMUNOGEN:	A peptide corresponding to the C-terminus of human Calponin-1
HOST/ISOTYPE:	Rabbit IgG
SPECIES REACTIVITY:	Human
PURIFICATION:	Protein A affinity purified from an animal origin free culture supernatant
FORM:	Liquid
FORMULATION:	50% Glycerol/PBS with 1% BSA and 0.09% sodium azide
SPECIFICITY:	This antibody reacts to human or mouse Calponin-1
STORAGE CONDITIONS:	For long term storage store at -20°C in small aliquots to prevent freeze-thaw cycles
DESCRIPTION:	Multiple isoelectric variants of calponin have been identified, however only two molecular weight isoforms exist; a 34kDa form and a 29kDa form. Expression of the 29kDa form, I-calponin, is primarily restricted to muscle of the urogenital tract, whereas the higher molecular weight variant has been demonstrated in vascular and visceral smooth muscle. In Western blotting, this MAb reacts with only the 34kDa form of calponin in extracts of human aortic medial smooth muscle and is unreactive with fibroblast extracts of cultivated human foreskin. Calponin is a calmodulin, F-actin and tropomyosin binding protein, which is thought to be involved in the regulation of smooth muscle contraction. Calponin expression is restricted to smooth muscle cells and has been shown to be a marker of the differentiated (contractile) phenotype of developing smooth muscle.
APPLICATION:	WB: 1:1000-1:2000 ICC: 1:100-1:200

Note: This information is only intended as a guide. The optimal dilutions must be determined by the user.



Immunocytochemistry of HeLa cells, using Calponin-1 Rabbit Monoclonal Antibody (Clone RM262) (red). Actin filaments have been labeled with fluorescein phalloidin (green), and nucleus stained with DAPI (blue).



Western Blot analysis of mouse heart tissue lysates, using anti- Calponin-1 rabbit monoclonal antibody (Clone RM262), shows Calponin-1 expression in mouse heart tissue

RELATED PRODUCTS:

- Anti-Calponin-1 Antibody (CALP) (Cat. No. A1462)

FOR RESEARCH USE ONLY! Not to be used on humans.