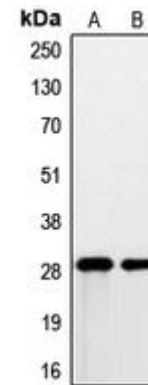


Anti-PSCA Antibody

CATALOG NO:	A1611-100
ALTERNATIVE NAMES:	PRO 232; PRO232; Prostate stem cell antigen
AMOUNT:	100 µl
IMMUNOGEN:	KLH-conjugated synthetic peptide encompassing a sequence within the center region of human PSCA
HOST/ISOTYPE:	Rabbit IgG
CLONALITY:	Polyclonal
SPECIFICITY:	Recognizes endogenous levels of PSCA protein
SPECIES REACTIVITY:	Human
PURIFICATION:	The antibody was purified by affinity chromatography
FORM:	Liquid
FORMULATION:	Supplied in 0.42% Potassium phosphate; 0.87% Sodium chloride; pH 7.3; 30% glycerol and 0.01% sodium azide
STORAGE CONDITIONS:	Shipped at 4°C. For long term storage store at -20°C in small aliquots to prevent freeze-thaw cycles
DESCRIPTION:	May be involved in the regulation of cell proliferation. Has a cell-proliferation inhibition activity in vitro. May act as a modulator of nicotinic acetylcholine receptors (nAChRs) activity. In vitro inhibits nicotine-induced signaling probably implicating alpha-3:beta-2- or alpha-7-containing nAChRs.
APPLICATION:	WB; 1:500 – 1:1000

Note: This information is only intended as a guide. The optimal dilutions must be determined by the user.



Western blot analysis of PSCA expression in DU145 (A); human prostate (B) whole cell lysates

RELATED PRODUCTS:

- Anti-ERM/ ETV5 Antibody (Cat. No. A1612)
- Anti-PAR6A Antibody (Cat. No. A1613)
- Anti-ST18 Antibody (Cat. No. A1614)
- Anti-ANKRD26 Antibody (Cat. No. A1615)

FOR RESEARCH USE ONLY! Not to be used on humans.