

Anti-ERM/ ETV5 Antibody

CATALOG NO:	A1612-100	100 µl
ALTERNATIVE NAMES:	ERM; Ets related protein ERM; ETS translocation variant 5; Ets variant gene 5; Ets-related protein ERM; ETV5; ETV5_HUMAN	
CONCENTRATION:	1 mg/ml	
IMMUNOGEN:	A synthesized peptide derived from human ETV5	
HOST/ISOTYPE:	Rabbit IgG	
CLONALITY:	Polyclonal	
MOL WEIGHT:	58 kDa	
SPECIES REACTIVITY:	Human, Mouse, Rat	
PURIFICATION:	Affinity purification	
FORM:	Liquid	
FORMULATION:	Supplied in phosphate buffered saline, pH 7.4, 150 mM NaCl, 0.02% sodium azide and 50% glycerol	
STORAGE CONDITIONS:	For long term storage store at -20°C in small aliquots to prevent freeze-thaw cycles	
DESCRIPTION:	Binds to DNA sequences containing the consensus nucleotide core sequence 5'-GGAA.-3'	
APPLICATION:	WB 1:500-1:2000 IHC 1:50-1:200 IP 1:100-1:500 ELISA (peptide) 1:20000-1:40000	

Note: This information is only intended as a guide. The optimal dilutions must be determined by the user.

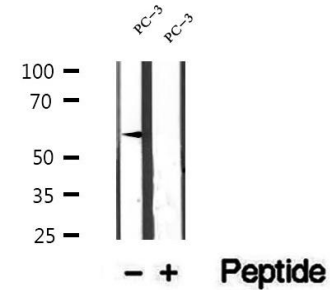
A

Fig. A. Western blot analysis of extracts of PC-3 cells

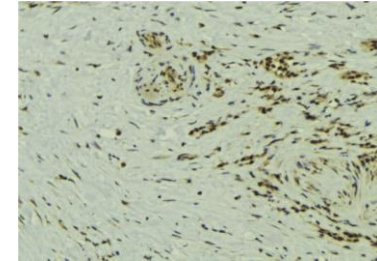
B

Fig. B IHC staining of Human breast cancer tissue

RELATED PRODUCTS:

- Anti-PSCA Antibody (**Cat. No. A1611**)
- Anti-PAR6A Antibody (**Cat. No. A1613**)
- Anti-ST18 Antibody (**Cat. No. A1614**)
- Anti-ANKRD26 Antibody (**Cat. No. A1615**)

FOR RESEARCH USE ONLY! Not to be used on humans.