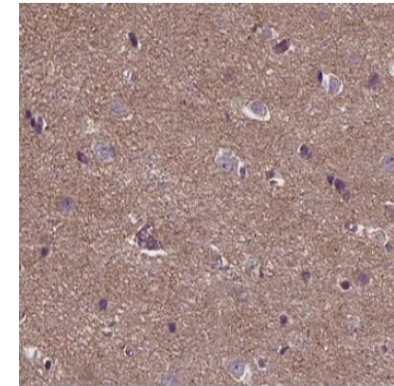


## Anti-ANKRD26 Antibody

|                            |  |
|----------------------------|--|
| <b>CATALOG NO:</b>         | A1615-100 100 µl   |
| <b>ALTERNATIVE NAMES:</b>  | Ankrd26; Ankyrin repeat domain 26; Ankyrin repeat domain-containing protein 26; Ankyrin repeat domaincontaining protein 26; ANR26_HUMAN; bA145E8.1; KIAA1074 |
| <b>CONCENTRATION:</b>      | 1 mg/ml  |
| <b>IMMUNOGEN:</b>          | A synthesized peptide derived from human ANKRD26   |
| <b>HOST/ISOTYPE:</b>       | Rabbit IgG   |
| <b>CLONALITY:</b>          | Polyclonal   |
| <b>MOL WEIGHT:</b>         | 197 kDa  |
| <b>SPECIES REACTIVITY:</b> | Human  |
| <b>PURIFICATION:</b>       | Affinity purification  |
| <b>FORM:</b>               | Liquid   |
| <b>FORMULATION:</b>        | Supplied in phosphate buffered saline, pH 7.4, 150 mM NaCl, 0.02% sodium azide and 50% glycerol  |
| <b>STORAGE CONDITIONS:</b> | For long term storage store at -20°C in small aliquots to prevent freeze-thaw cycles   |
| <b>DESCRIPTION:</b>        | Acts as a regulator of adipogenesis. Involved in the regulation of the feeding behavior.   |
| <b>APPLICATION:</b>        | IHC 1:50-1:200,<br>ELISA (peptide) 1:20000-1:40000   |

**Note:** This information is only intended as a guide. The optimal dilutions must be determined by the user.



IHC staining of human brain tissue using ANKRD26 Antibody

### RELATED PRODUCTS:

- Anti-PSCA Antibody (Cat. No. A1611)
- Anti-ERM/ ETV5 Antibody (Cat. No. A1612)
- Anti-PAR6A Antibody (Cat. No. A1613)
- Anti-ST18 Antibody (Cat. No. A1614)

**FOR RESEARCH USE ONLY! Not to be used on humans.**