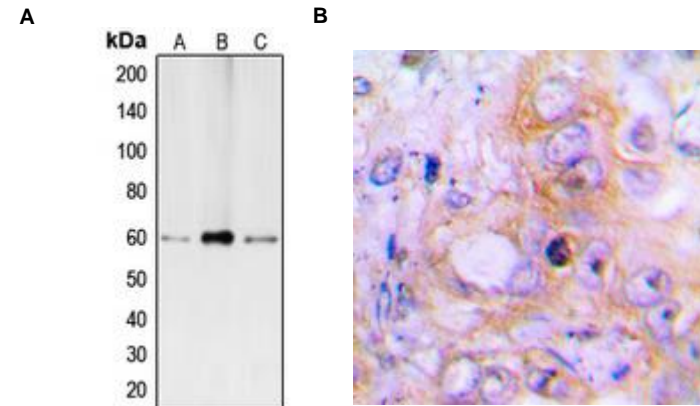


## Anti-BMP2 Antibody

<b>CATALOG NO:</b>	A1621-100
<b>ALTERNATIVE NAMES:</b>	BMP2A; Bone morphogenetic protein 2; BMP-2; Bone morphogenetic protein 2A; BMP-2A
<b>AMOUNT:</b>	100 µl
<b>IMMUNOGEN:</b>	KLH-conjugated synthetic peptide encompassing a sequence within the center region of human BMP2
<b>HOST/ISOTYPE:</b>	Rabbit IgG
<b>CLONALITY:</b>	Polyclonal
<b>SPECIFICITY:</b>	Recognizes endogenous levels of BMP2 protein
<b>SPECIES REACTIVITY:</b>	Human, Mouse, Rat
<b>PURIFICATION:</b>	The antibody was purified by affinity chromatography
<b>FORM:</b>	Liquid
<b>FORMULATION:</b>	Supplied in 0.42% Potassium phosphate; 0.87% Sodium chloride; pH 7.3; 30% glycerol and 0.01% sodium azide
<b>STORAGE CONDITIONS:</b>	Shipped at 4°C. For long term storage store at -20°C in small aliquots to prevent freeze-thaw cycles
<b>DESCRIPTION:</b>	BMPs (bone morphogenetic proteins) belong to the TGF-beta superfamily of structurally related signaling proteins. Members of this superfamily are widely represented throughout the animal kingdom and have been implicated in a variety of developmental processes. Proteins of the TGF-beta superfamily are disulfide-linked dimers composed of two 12-15 kDa polypeptide chains. As implied by their name, BMPs initiate, promote and regulate bone development, growth, remodeling and repair. In addition to its osteogenic activity, BMP-2 plays an important role in cardiac morphogenesis. It is also expressed in a variety of tissues such as lung, spleen, brain, liver, prostate ovary and small intestine.
<b>APPLICATION:</b>	WB: 1:500 – 1:1000 IHC: 1:100 – 1:200

**Note:** This information is only intended as a guide. The optimal dilutions must be determined by the user.



**Fig. A.** Western blot analysis of BMP2 expression in Caco2 (A); HepG2 (B); THP1 (C) whole cell lysates

**Fig. B.** IHC staining of BMP2 in human lung cancer using BMP2 antibody

### RELATED PRODUCTS:

- BMP-2 Antibody (**Cat. No. 5672**)
- Human CellExp™ BMP-2, Human Recombinant (**Cat. No. 3946-100**)
- BMP-2, human recombinant (**Cat. No. 4577**)
- BMP-2 (human) ELISA Kit (**Cat. No. K4744**)

**FOR RESEARCH USE ONLY! Not to be used on humans.**