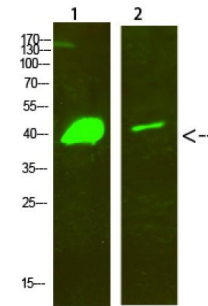


Anti-Dlx-2 Antibody

| | |
|----------------------------|---|
| CATALOG NO: | A1624-100 100 µl |
| ALTERNATE NAMES: | Homeobox protein DLX-2 |
| AMOUNT: | 100 µl |
| CONCENTRATION: | 1 mg/ml |
| IMMUNOGEN: | Synthesized peptide derived from human Dlx-2 (101-150aa) |
| MOL. WEIGHT | 42 kDa |
| HOST/ISOTYPE: | Rabbit IgG |
| SPECIES REACTIVITY: | Human, Mouse, Rat |
| SPECIFICITY: | Dlx-2 Polyclonal Antibody detects endogenous levels of Dlx-2 |
| PURIFICATION: | The antibody was affinity-purified from rabbit serum by affinity-chromatography using specific immunogen. |
| FORM: | Liquid |
| FORMULATION: | PBS containing 50% glycerol, 0.5% BSA and 0.02% sodium azide |
| STORAGE CONDITIONS: | Store at -20°C. Avoid repeated freeze/thaw cycles. |
| DESCRIPTION: | Acts as a transcriptional activator. Plays a role in terminal differentiation of interneurons, such as amacrine and bipolar cells in the developing retina. Likely to play a regulatory role in the development of the ventral forebrain. May play a role in craniofacial patterning and morphogenesis. |
| APPLICATION: | WB 1:500-1:2000 ELISA 1:10000- 20000 |

Note: This information is only intended as a guide. The optimal dilutions must be determined by the user.



Western Blot analysis of 1) HeLa, 2) mouse-brain cells using Dlx-2 antibody

RELATED PRODUCTS:

- GFAP Antibody (Cat. No. 3206)
- Vimentin Antibody (Cat. No. 3634)
- Fibronectin Antibody (Cat. No. 3630)
- FGF-2 Antibody (Cat. No. 5039)
- Anti-CD133 Antibody (Cat. No. A1622)
- Anti-CTNND2 Antibody (Cat. No. A1623)

FOR RESEARCH USE ONLY! Not to be used on humans.