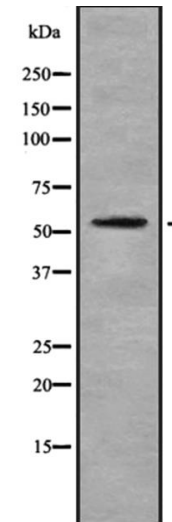


Anti-EAAT1 Antibody

CATALOG NO:	A1627-100 100 µl
ALTERNATIVE NAMES:	EA6; EAA1_HUMAN; EAAT1; Excitatory amino acid transporter 1; FLJ25094; GLAST; GLAST-1; GLAST1; Glial high affinity glutamate transporter; glutamate/aspartate transporter, high affinity, sodium-dependent; High affinity neuronal glutamate transporter; Slc1a3; Sodium dependent glutamate/aspartate transporter; Sodium-dependent glutamate/aspartate transporter 1; Solute carrier family 1 (glial high affinity glutamate transporter) member 3; Solute carrier family 1 member 3
CONCENTRATION:	1 mg/ml
IMMUNOGEN:	Synthesized peptide derived from human EAAT1
HOST/ISOTYPE:	Rabbit IgG
CLONALITY:	Polyclonal
MOL WEIGHT:	60 kDa
SPECIES REACTIVITY:	Human
PURIFICATION:	Affinity purification
FORM:	Liquid
FORMULATION:	Supplied in phosphate buffered saline, pH 7.4, 150 mM NaCl, 0.02% sodium azide and 50% glycerol
STORAGE CONDITIONS:	For long term storage store at -20°C in small aliquots to prevent freeze-thaw cycles
DESCRIPTION:	Sodium-dependent, high-affinity amino acid transporter that mediates the uptake of L-glutamate and also L-aspartate and D-aspartate. Functions as a symporter that transports one amino acid molecule together with two or three Na ⁺ ions and one proton, in parallel with the counter-transport of one K ⁺ ion. Mediates Cl ⁻ flux that is not coupled to amino acid transport; this avoids the accumulation of negative charges due to aspartate and Na ⁺ symport. Plays a redundant role in the rapid removal of released glutamate from the synaptic cleft, which is essential for terminating the postsynaptic action of glutamate.
APPLICATION:	WB 1:1000-1:3000 ELISA (peptide) 1:20000-1:40000

Note: This information is only intended as a guide. The optimal dilutions must be determined by the user.



Western blot analysis of COLO205 whole cell lysates using EAAT1 antibody

RELATED PRODUCTS:

- GFAP Antibody (Cat. No. 3206)
- Vimentin Antibody (Cat. No. 3634)
- Fibronectin Antibody (Cat. No. 3630)
- FGF-2 Antibody (Cat. No. 5039)
- Anti-CD133 Antibody (Cat. No. A1622)
- Anti-CHRDL1 Antibody (Cat. No. A1623)

FOR RESEARCH USE ONLY! Not to be used on humans.