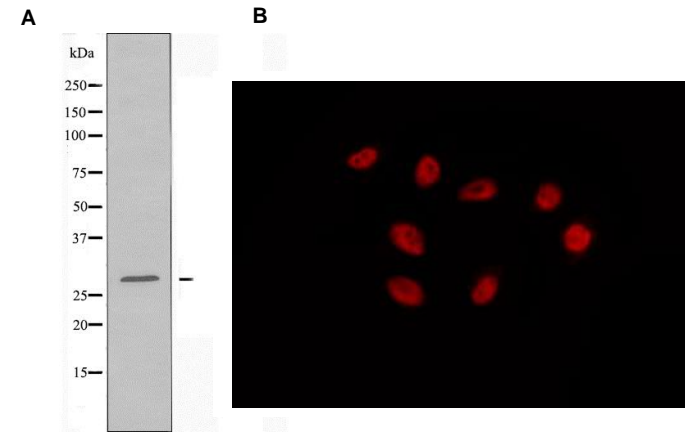


## Anti-EMX1 Antibody

<b>CATALOG NO:</b>	A1628-100	100 µl
<b>ALTERNATIVE NAMES:</b>	Empty spiracles homeobox 1; Empty spiracles homolog 1; empty spiracles homolog 1 Drosophila; Empty spiracles like protein 1; Empty spiracles-like protein 1; EMX1; EMX1_HUMAN; Homeobox protein EMX1	
<b>CONCENTRATION:</b>	1 mg/ml	
<b>IMMUNOGEN:</b>	Synthesized peptide	
<b>HOST/ISOTYPE:</b>	Rabbit IgG	
<b>CLONALITY:</b>	Polyclonal	
<b>MOL WEIGHT:</b>	29 kDa	
<b>SPECIES REACTIVITY:</b>	Human, Mouse, Rat	
<b>PURIFICATION:</b>	Affinity purification	
<b>FORM:</b>	Liquid	
<b>FORMULATION:</b>	Supplied in phosphate buffered saline, pH 7.4, 150 mM NaCl, 0.02% sodium azide and 50% glycerol	
<b>STORAGE CONDITIONS:</b>	For long term storage store at -20°C in small aliquots to prevent freeze-thaw cycles	
<b>DESCRIPTION:</b>	Transcription factor, which in cooperation with EMX2, acts to generate the boundary between the roof and archipallium in the developing brain. May function in combinations with OTX1/2 to specify cell fates in the developing central nervous system.	
<b>APPLICATION:</b>	WB 1:500-1:1000 IF/ICC 1:100-1:500 ELISA (peptide) 1:20000-1:40000	
	<b>Note: This information is only intended as a guide. The optimal dilutions must be determined by the user.</b>	



**Fig. A. Western blot analysis of HuvEc whole cell lysates using EMX1 antibody**

**Fig. B IF/ICC staining of HepG2 cells using EMX1 antibody**

### RELATED PRODUCTS:

- GFAP Antibody (Cat. No. 3206)
- Vimentin Antibody (Cat. No. 3634)
- Fibronectin Antibody (Cat. No. 3630)
- FGF-2 Antibody (Cat. No. 5039)
- Anti-CD133 Antibody (Cat. No. A1622)
- Anti-CHRD1 Antibody (Cat. No. A1623)

**FOR RESEARCH USE ONLY! Not to be used on humans.**