

Anti-GDF7 Antibody

CATALOG NO:	A1634-100
ALTERNATIVE NAMES:	Growth/differentiation factor 7; GDF-7
AMOUNT:	100 µl
IMMUNOGEN:	KLH-conjugated synthetic peptide encompassing a sequence within the center region of human GDF7
HOST/ISOTYPE:	Rabbit IgG
CLONALITY:	Polyclonal
SPECIFICITY:	Recognizes endogenous levels of GDF7 protein
SPECIES REACTIVITY:	Human
PURIFICATION:	The antibody was purified by affinity chromatography
FORM:	Liquid
FORMULATION:	Supplied in 0.42% Potassium phosphate; 0.87% Sodium chloride; pH 7.3; 30% glycerol and 0.01% sodium azide
STORAGE CONDITIONS:	Shipped at 4°C. For long term storage store at -20°C in small aliquots to prevent freeze-thaw cycles
DESCRIPTION:	May play an active role in the motor area of the primate neocortex.
APPLICATION:	WB; 1:500 – 1:1000 IHC: 1:100 – 1:200

Note: This information is only intended as a guide. The optimal dilutions must be determined by the user.

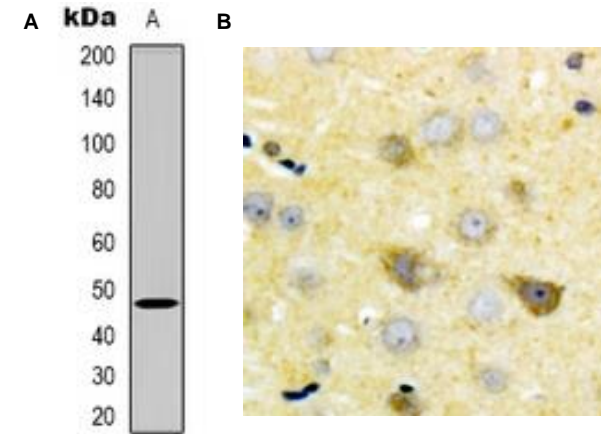


Fig. A. Western blot analysis of GDF7 expression in HeLa whole cell lysates.

Fig. B. Immunohistochemical analysis of GDF7 staining in human brain formalin fixed paraffin embedded tissue section.

RELATED PRODUCTS:

- GFAP Antibody (Cat. No. 3206)
- Vimentin Antibody (Cat. No. 3634)
- Fibronectin Antibody (Cat. No. 3630)
- FGF-2 Antibody (Cat. No. 5039)
- Anti-CD133 Antibody (Cat. No. A1622)
- Anti-CHRD1 Antibody (Cat. No. A1623)

FOR RESEARCH USE ONLY! Not to be used on humans.