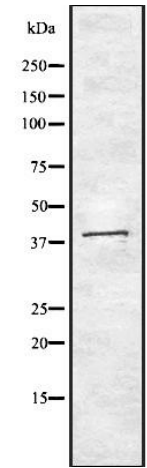


## Anti-MNX1 Antibody

|                            |  |
|----------------------------|--|
| <b>CATALOG NO:</b>         | A1635-100 100 µl   |
| <b>ALTERNATIVE NAMES:</b>  | HB 9; HB9; HLXB 9; HLXB9; Homeo box HB9; Homeobox HB9; Homeobox protein HB9; HOXHB9; MNX1; MNX1_HUMAN; Motor neuron and pancreas homeobox 1; Motor neuron and pancreas homeobox protein 1; Sacral agenesis autosomal dominant (Currarino triad); SCRA 1; SCRA1 |
| <b>CONCENTRATION:</b>      | 1 mg/ml  |
| <b>IMMUNOGEN:</b>          | A synthesized peptide derived from human MNX1  |
| <b>HOST/ISOTYPE:</b>       | Rabbit IgG   |
| <b>CLONALITY:</b>          | Polyclonal   |
| <b>MOL WEIGHT:</b>         | 41 kDa   |
| <b>SPECIES REACTIVITY:</b> | Human, Mouse, Rat  |
| <b>PURIFICATION:</b>       | Affinity purification  |
| <b>FORM:</b>               | Liquid   |
| <b>FORMULATION:</b>        | Supplied in phosphate buffered saline, pH 7.4, 150 mM NaCl, 0.02% sodium azide and 50% glycerol  |
| <b>STORAGE CONDITIONS:</b> | For long term storage store at -20°C in small aliquots to prevent freeze-thaw cycles   |
| <b>DESCRIPTION:</b>        | Putative transcription factor involved in pancreas development and function  |
| <b>APPLICATION:</b>        | WB 1:1000-1:3000<br>ELISA (peptide) 1:20000-1:40000  |

**Note:** This information is only intended as a guide. The optimal dilutions must be determined by the user.



Western blot analysis of LOVO whole cell lysates using MNX1 antibody

### RELATED PRODUCTS:

- GFAP Antibody (Cat. No. 3206)
- Vimentin Antibody (Cat. No. 3634)
- Fibronectin Antibody (Cat. No. 3630)
- FGF-2 Antibody (Cat. No. 5039)
- Anti-CD133 Antibody (Cat. No. A1622)
- Anti-CHRDL1 Antibody (Cat. No. A1623)

**FOR RESEARCH USE ONLY! Not to be used on humans.**