

Anti-ITGA4 Antibody

CATALOG NO:	A1640-100 100 µl
ALTERNATIVE NAMES:	269C wild type; Antigen CD49D, alpha 4 subunit of VLA 4 receptor; CD49 antigen like family member D; CD49 antigen-like family member D; CD49d; IA4; Integrin alpha 4; Integrin alpha 4 subunit; Integrin alpha IV; Integrin alpha-4; Integrin alpha-IV; Integrin, alpha 4 (antigen CD49D, alpha 4 subunit of VLA 4 receptor); ITA4_HUMAN; ITGA4; MGC90518; OTTHUMP00000205320; Very late activation protein 4 receptor, alpha 4 subunit; VLA 4 subunit alpha; VLA-4 subunit alpha; VLA4
CONCENTRATION:	1 mg/ml
IMMUNOGEN:	A synthesized peptide derived from human ITGA4.
HOST/ISOTYPE:	Rabbit IgG
CLONALITY:	Polyclonal
MOL WEIGHT:	115 kDa
SPECIES REACTIVITY:	Human, Mouse, Rat
PURIFICATION:	Affinity purification
FORM:	Liquid
FORMULATION:	Supplied in phosphate buffered saline, pH 7.4, 150 mM NaCl, 0.02% sodium azide and 50% glycerol
STORAGE CONDITIONS:	For long term storage store at -20°C in small aliquots to prevent freeze-thaw cycles
DESCRIPTION:	Integrins are α/β heterodimeric cell surface receptors that play a pivotal role in cell adhesion and migration, as well as in growth and survival. The integrin family contains at least 18 α and 8 β subunits that form 24 known integrins with distinct tissue distribution and overlapping ligand specificities. Integrins not only transmit signals to cells in response to the extracellular environment (outside-in signaling), but also sense intracellular cues to alter their interaction with the extracellular environment (inside-out signaling). A pair of important $\alpha 4$ integrins, $\alpha 4\beta 1$ and $\alpha 4\beta 7$, interact with VCAM-1, fibronectin, and MAdCAM-1 at cell adhesions. Gene knockout and antibody blocking research reveal that $\alpha 4$ integrins play important roles in embryonic liver and heart development and in fetal lymphocyte homing. Phosphorylation at Ser988 within the cytoplasmic tail of integrin $\alpha 4$ blocks binding to paxillin and promotes leading edge migration.

APPLICATION: WB 1:500-1:2000
 IHC 1:50-1:200
 ELISA (peptide) 1:20000-1:40000

Note: This information is only intended as a guide. The optimal dilutions must be determined by the user.

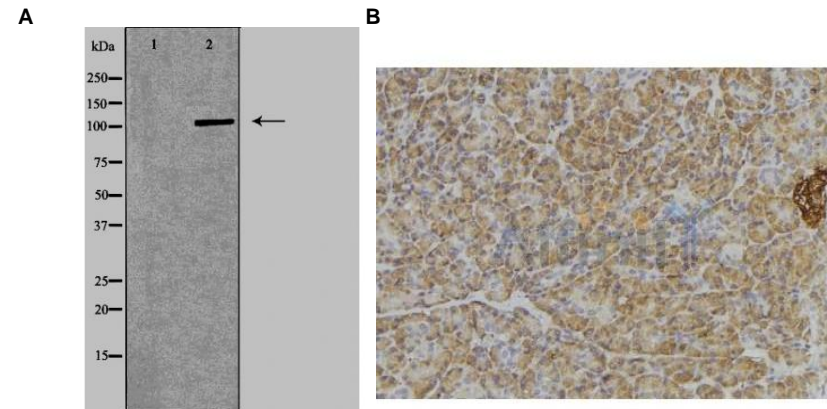


Fig. A. Western blot analysis of Jurkat lysate using ITGA4 Ab. The lane on the left is treated with the antigen-specific peptide

Fig. B IHC staining of human pancreas tissue using ITGA4 antibody

RELATED PRODUCTS:

- GFAP Antibody (Cat. No. 3206)
- Vimentin Antibody (Cat. No. 3634)
- Fibronectin Antibody (Cat. No. 3630)
- FGF-2 Antibody (Cat. No. 5039)
- Anti-CD133 Antibody (Cat. No. A1622)
- Anti-CHRD1 Antibody (Cat. No. A1623)

FOR RESEARCH USE ONLY! Not to be used on humans.

