

Anti-Islet-1 Antibody

CATALOG NO:	A1642-100
ALTERNATIVE NAMES:	Insulin gene enhancer protein ISL-1; Islet-1
AMOUNT:	100 µl
IMMUNOGEN:	Recombinant full length protein of human Islet-1
HOST/ISOTYPE:	Rabbit IgG
CLONALITY:	Polyclonal
SPECIFICITY:	Recognizes endogenous levels of Islet-1 protein
SPECIES REACTIVITY:	Human, Mouse, Rat
PURIFICATION:	The antibody was purified by affinity chromatography
FORM:	Liquid
FORMULATION:	Supplied in 0.42% Potassium phosphate; 0.87% Sodium chloride; pH 7.3; 30% glycerol and 0.01% sodium azide
STORAGE CONDITIONS:	Shipped at 4°C. For long term storage store at -20°C in small aliquots to prevent freeze-thaw cycles
DESCRIPTION:	DNA-binding transcriptional activator. Recognizes and binds to the consensus octamer binding site 5'-ATAATTAA-3' in promoter of target genes. Plays a fundamental role in the gene regulatory network essential for retinal ganglion cell (RGC) differentiation. Cooperates with the transcription factor POU4F2 to achieve maximal levels of expression of RGC target genes and RGC fate specification in the developing retina. Involved in the specification of motor neurons in cooperation with LHX3 and LDB1. Binds to insulin gene enhancer sequences. Essential for heart development. Marker of one progenitor cell population that give rise to the outflow tract, right ventricle, a subset of left ventricular cells, and a large number of atrial cells as well, its function is required for these progenitors to contribute to the heart. Controls the expression of FGF and BMP growth factors in this cell population and is required for proliferation and survival of cells within pharyngeal foregut endoderm and adjacent splanchnic mesoderm as well as for migration of cardiac progenitors into the heart.
APPLICATION:	WB; 1:500 – 1:2000 IF/IC; 1:50 – 1:200

Note: This information is only intended as a guide. The optimal dilutions must be determined by the user.

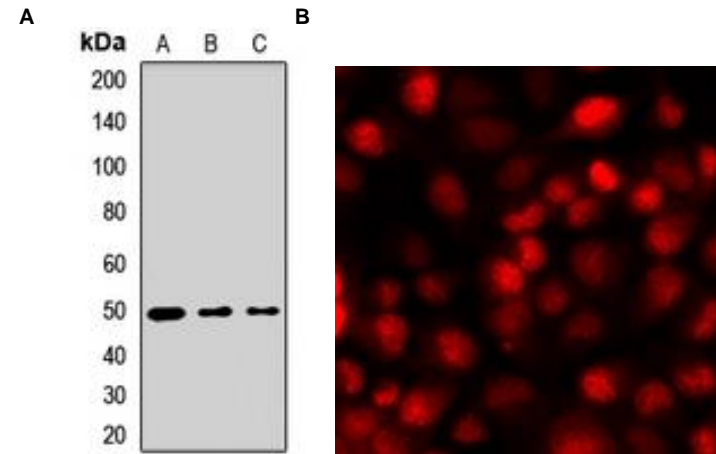


Fig. A. Western blot analysis of Islet-1 expression in HeLa (A); mouse thymus (B); rat thymus (C) whole cell lysates

Fig. B. IF/ICC of Islet-1 staining in A549 cells

RELATED PRODUCTS:

- GFAP Antibody (Cat. No. 3206)
- Vimentin Antibody (Cat. No. 3634)
- Fibronectin Antibody (Cat. No. 3630)
- FGF-2 Antibody (Cat. No. 5039)
- Anti-CD133 Antibody (Cat. No. A1622)
- Anti-CHRDL1 Antibody (Cat. No. A1623)

FOR RESEARCH USE ONLY! Not to be used on humans.