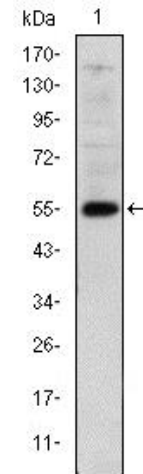


Anti-LHX2 Antibody

CATALOG NO:	A1643-100	100 µl
ALTERNATIVE NAMES:	hLhx2; Homeobox protein LH-2; Homeobox protein LH2; LH2; LHX2; LHX2_HUMAN; LIM homeobox 2; LIM homeobox protein 2; LIM HOX gene 2; LIM/homeobox protein Lhx2	
CONCENTRATION:	1 mg/ml	
IMMUNOGEN:	Purified recombinant fragment of human LHX2 expressed in <i>E. Coli</i> .	
HOST/ISOTYPE:	Rabbit IgG	
CLONALITY:	Polyclonal	
MOL WEIGHT:	45 kDa	
SPECIES REACTIVITY:	Human, Mouse, Rat	
PURIFICATION:	Affinity purification	
FORM:	Liquid	
FORMULATION:	Supplied in phosphate buffered saline, pH 7.4, 150 mM NaCl, 0.02% sodium azide and 50% glycerol	
STORAGE CONDITIONS:	For long term storage store at -20°C in small aliquots to prevent freeze-thaw cycles	
DESCRIPTION:	This gene encodes a protein belonging to a large protein family, members of which carry the LIM domain, a unique cysteine-rich zinc-binding domain. The encoded protein may function as a transcriptional regulator.	
APPLICATION:	WB 1:500-1:2000 IF/ICC 1:200-1:1000 ELISA (peptide) 1:20000-1:40000	

Note: This information is only intended as a guide. The optimal dilutions must be determined by the user.



Western blot analysis of human LHX2 recombinant protein using LHX2 antibody

RELATED PRODUCTS:

- GFAP Antibody (Cat. No. 3206)
- Vimentin Antibody (Cat. No. 3634)
- Fibronectin Antibody (Cat. No. 3630)
- FGF-2 Antibody (Cat. No. 5039)
- Anti-CD133 Antibody (Cat. No. A1622)
- Anti-CHRDL1 Antibody (Cat. No. A1623)
- Anti-HES3 Antibody (Cat. No. A1636)

FOR RESEARCH USE ONLY! Not to be used on humans.