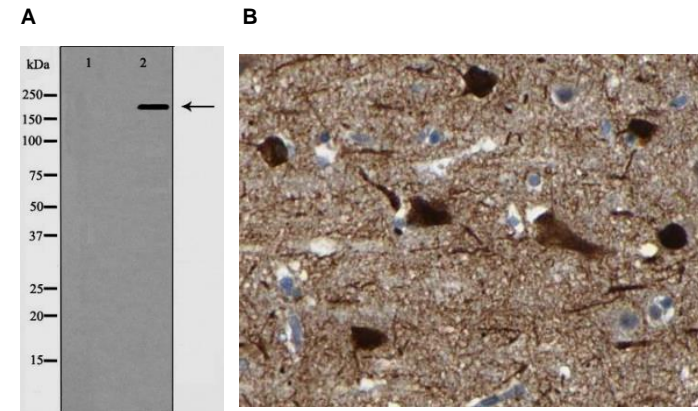


## Anti-MAP2 Antibody

<b>CATALOG NO:</b>	A1644-100	100 µl
<b>ALTERNATIVE NAMES:</b>	DKFZp686I2148; MAP 2; MAP dendrite specific; MAP-2; MAP2; MAP2A; MAP2B; MAP2C; Microtubule associated protein 2; Microtubule-associated protein 2; MTAP2_HUMAN	
<b>CONCENTRATION:</b>	1 mg/ml	
<b>IMMUNOGEN:</b>	A synthesized peptide derived from human MAP2	
<b>HOST/ISOTYPE:</b>	Rabbit IgG	
<b>CLONALITY:</b>	Polyclonal	
<b>MOL WEIGHT:</b>	200 kDa	
<b>SPECIES REACTIVITY:</b>	Human, Mouse, Rat	
<b>PURIFICATION:</b>	Affinity purification	
<b>FORM:</b>	Liquid	
<b>FORMULATION:</b>	Supplied in phosphate buffered saline, pH 7.4, 150 mM NaCl, 0.02% sodium azide and 50% glycerol	
<b>STORAGE CONDITIONS:</b>	For long term storage store at -20°C in small aliquots to prevent freeze-thaw cycles	
<b>DESCRIPTION:</b>	The exact function of MAP2 is unknown but MAPs may stabilize the microtubules against depolymerization. They also seem to have a stiffening effect on microtubules.	
<b>APPLICATION:</b>	WB 1:1000-1:3000 IHC 1:50-1:200 ELISA (peptide) 1:20000-1:40000	

**Note:** This information is only intended as a guide. The optimal dilutions must be determined by the user.



**Fig. A.** Western blot analysis of mouse brain whole cell lysates using MAP2 antibody

**Fig. B** IHC staining of human brain using MAP2 antibody

### RELATED PRODUCTS:

- GFAP Antibody (Cat. No. 3206)
- Vimentin Antibody (Cat. No. 3634)
- Fibronectin Antibody (Cat. No. 3630)
- FGF-2 Antibody (Cat. No. 5039)
- Anti-CD133 Antibody (Cat. No. A1622)
- Anti-CHRDL1 Antibody (Cat. No. A1623)
- Anti-HES3 Antibody (Cat. No. A1636)

**FOR RESEARCH USE ONLY! Not to be used on humans.**