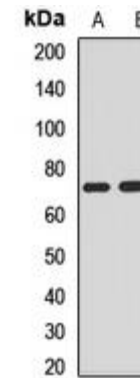


## Anti-NEDD1 Antibody

<b>CATALOG NO:</b>	A1647-100
<b>ALTERNATIVE NAMES:</b>	Protein NEDD1; Neural precursor cell expressed developmentally down-regulated protein 1; NEDD-1
<b>AMOUNT:</b>	100 µl
<b>IMMUNOGEN:</b>	Recombinant full length protein of human NEDD1
<b>HOST/ISOTYPE:</b>	Rabbit IgG
<b>CLONALITY:</b>	Polyclonal
<b>SPECIFICITY:</b>	Recognizes endogenous levels of NEDD1 protein
<b>SPECIES REACTIVITY:</b>	Human, Mouse, Rat
<b>PURIFICATION:</b>	The antibody was purified by affinity chromatography
<b>FORM:</b>	Liquid
<b>FORMULATION:</b>	Supplied in 0.42% Potassium phosphate; 0.87% Sodium chloride; pH 7.3; 30% glycerol and 0.01% sodium azide
<b>STORAGE CONDITIONS:</b>	Shipped at 4°C. For long term storage store at -20°C in small aliquots to prevent freeze-thaw cycles
<b>DESCRIPTION:</b>	Required for mitosis progression. Promotes the nucleation of microtubules from the spindle
<b>APPLICATION:</b>	WB; 1:500 – 1:2000

**Note: This information is only intended as a guide. The optimal dilutions must be determined by the user.**



**Western blot analysis of NEDD1 expression in mouse brain (A); rat brain (B) whole cell lysates.**

### RELATED PRODUCTS:

- GFAP Antibody (Cat. No. 3206)
- Vimentin Antibody (Cat. No. 3634)
- Fibronectin Antibody (Cat. No. 3630)
- FGF-2 Antibody (Cat. No. 5039)
- Anti-CD133 Antibody (Cat. No. A1622)
- Anti-CHRDL1 Antibody (Cat. No. A1623)

**FOR RESEARCH USE ONLY! Not to be used on humans.**