

Anti-OLFM1 Antibody

CATALOG NO:	A1651-100
ALTERNATIVE NAMES:	NOE1; NOEL1; Noelin; Neuronal olfactomedin-related ER localized protein; Olfactomedin-1
AMOUNT:	100 µl
IMMUNOGEN:	Recombinant full length protein of human OLFM1
HOST/ISOTYPE:	Rabbit IgG
CLONALITY:	Polyclonal
SPECIFICITY:	Recognizes endogenous levels of OLFM1 protein
SPECIES REACTIVITY:	Human, Mouse, Rat
PURIFICATION:	The antibody was purified by affinity chromatography
FORM:	Liquid
FORMULATION:	Supplied in 0.42% Potassium phosphate; 0.87% Sodium chloride; pH 7.3; 30% glycerol and 0.01% sodium azide
STORAGE CONDITIONS:	Shipped at 4°C. For long term storage store at -20°C in small aliquots to prevent freeze-thaw cycles
DESCRIPTION:	Contributes to the regulation of axonal growth in the embryonic and adult central nervous system by inhibiting interactions between RTN4R and LINGO1. Inhibits RTN4R-mediated axon growth cone collapse. May play an important role in regulating the production of neural crest cells by the neural tube. May be required for normal responses to olfactory stimuli.
APPLICATION:	WB; 1:500 – 1:1000, IH; 1:50 – 1:200

Note: This information is only intended as a guide. The optimal dilutions must be determined by the user.

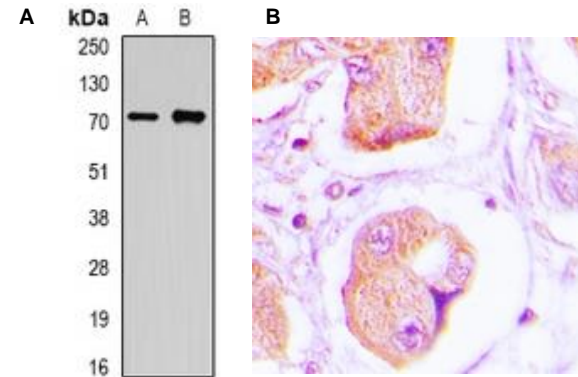


Fig. A. Western blot analysis of OLFM1 expression in A549 (A); mouse brain (B) whole cell lysates

Fig. B. IHC analysis of OLFM1 expression in human lung cancer tissue

RELATED PRODUCTS:

- Anti-NOTCH 2 Antibody (Cat. No. A1652)
- Anti-NOTCH 3 Antibody (Cat. No. A1653)
- Anti-NR2E1 Antibody (Cat. No. A1654)
- Anti-Nucleostemin Antibody (Cat. No. A1655)
- Anti-OLIG2 Antibody (Cat. No. A1656)
- Anti-PAX3 Antibody (Cat. No. A1657)
- Anti-PLAGL1 Antibody (Cat. No. A1658)
- Anti-S100B Antibody (Cat. No. A1659)
- Anti-SLUG Antibody (Cat. No. A1660)

FOR RESEARCH USE ONLY! Not to be used on humans.