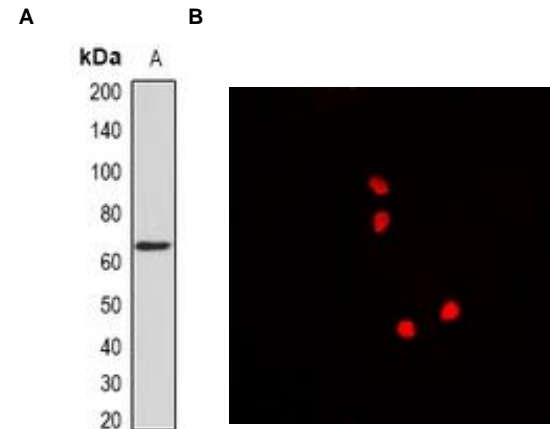


## Anti-Nucleostemin Antibody

<b>CATALOG NO:</b>	A1655-100
<b>ALTERNATIVE NAMES:</b>	E2IG3; NS; Guanine nucleotide-binding protein-like 3; E2-induced gene 3 protein; Novel nucleolar protein 47; NNP47; Nucleolar GTP-binding protein 3; Nucleostemin
<b>AMOUNT:</b>	100 µl
<b>IMMUNOGEN:</b>	Recombinant full length protein of human Nucleostemin
<b>HOST/ISOTYPE:</b>	Rabbit IgG
<b>CLONALITY:</b>	Polyclonal
<b>SPECIFICITY:</b>	Recognizes endogenous levels of Nucleostemin protein
<b>SPECIES REACTIVITY:</b>	Human
<b>PURIFICATION:</b>	The antibody was purified by affinity chromatography
<b>FORM:</b>	Liquid
<b>FORMULATION:</b>	Supplied in 0.42% Potassium phosphate; 0.87% Sodium chloride; pH 7.3; 30% glycerol and 0.01% sodium azide
<b>STORAGE CONDITIONS:</b>	Shipped at 4°C. For long term storage store at -20°C in small aliquots to prevent freeze-thaw cycles
<b>DESCRIPTION:</b>	May be required to maintain the proliferative capacity of stem cells. Stabilizes MDM2 by preventing its ubiquitination, and hence proteasomal degradation.
<b>APPLICATION:</b>	WB; 1:500 – 1:1000, IF/IC; 1:10 – 1:100

**Note: This information is only intended as a guide. The optimal dilutions must be determined by the user.**



**Fig. A. Western blot analysis of Nucleostemin expression in HEK293T whole cell lysates**

**Fig. B. IF/ICC analysis of Nucleostemin staining in A549 cells**

### RELATED PRODUCTS:

- Anti-NOTCH 2 Antibody (Cat. No. A1652)
- Anti-NOTCH 3 Antibody (Cat. No. A1653)
- Anti-NR2E1 Antibody (Cat. No. A1654)
- Anti-OLIG2 Antibody (Cat. No. A1656)
- Anti-PAX3 Antibody (Cat. No. A1657)
- Anti-PLAGL1 Antibody (Cat. No. A1658)
- Anti-S100B Antibody (Cat. No. A1659)
- Anti-SLUG Antibody (Cat. No. A1660)

**FOR RESEARCH USE ONLY! Not to be used on humans.**