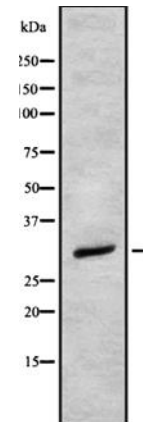


Anti-OLIG2 Antibody

CATALOG NO:	A1656-100 100 µl
ALTERNATIVE NAMES:	BHLHB1; BHLHE19; PRKCBP2; RACK17; Oligodendrocyte transcription factor 2; Oligo2; Class B basic helix-loop-helix protein 1; bHLHb1; Class E basic helix-loop-helix protein 19; bHLHe19; Protein kinase C-binding protein 2; Protein kinase C-binding protein RACK17
CONCENTRATION:	1 mg/ml
IMMUNOGEN:	A synthesized peptide derived from human OLIG2
HOST/ISOTYPE:	Rabbit IgG
CLONALITY:	Polyclonal
MOL WEIGHT:	32 kDa
SPECIES REACTIVITY:	Human
PURIFICATION:	Affinity purification
FORM:	Liquid
FORMULATION:	Supplied in phosphate buffered saline, pH 7.4, 150 mM NaCl, 0.02% sodium azide and 50% glycerol
STORAGE CONDITIONS:	For long term storage store at -20°C in small aliquots to prevent freeze-thaw cycles
DESCRIPTION:	Required for oligodendrocyte and motor neuron specification in the spinal cord, as well as for the development of somatic motor neurons in the hindbrain. Cooperates with OLIG1 to establish the pMN domain of the embryonic neural tube. Antagonist of V2 interneuron and of NKX2-2-induced V3 interneuron development.
APPLICATION:	WB 1:1000-3000, ELISA (peptide) 1:20000-1:40000

Note: This information is only intended as a guide. The optimal dilutions must be determined by the user.



Western blot analysis OLIG2 using K562 whole cell lysates

RELATED PRODUCTS:

- Anti-NOTCH 2 Antibody (Cat. No. A1652)
- Anti-NOTCH 3 Antibody (Cat. No. A1653)
- Anti-NR2E1 Antibody (Cat. No. A1654)
- Anti-Nucleostemin Antibody (Cat. No. A1655)
- Anti-PAX3 Antibody (Cat. No. A1657)
- Anti-PLAGL1 Antibody (Cat. No. A1658)
- Anti-S100B Antibody (Cat. No. A1659)
- Anti-SLUG Antibody (Cat. No. A1660)

FOR RESEARCH USE ONLY! Not to be used on humans.