

Anti-PLAGL1 Antibody

| | |
|----------------------------|---|
| CATALOG NO: | A1658-100 100 µl |
| ALTERNATIVE NAMES: | LOT1; ZAC; Zinc finger protein PLAGL1; Lost on transformation 1; LOT-1; Pleiomorphic adenoma-like protein 1; Tumor suppressor ZAC |
| CONCENTRATION: | 1 mg/ml |
| IMMUNOGEN: | A synthesized peptide |
| HOST/ISOTYPE: | Rabbit IgG |
| CLONALITY: | Polyclonal |
| MOL WEIGHT: | 50 kDa |
| SPECIES REACTIVITY: | Human, Rat |
| PURIFICATION: | Affinity purification |
| FORM: | Liquid |
| FORMULATION: | Supplied in phosphate buffered saline, pH 7.4, 150 mM NaCl, 0.02% sodium azide and 50% glycerol |
| STORAGE CONDITIONS: | For long term storage store at -20°C in small aliquots to prevent freeze-thaw cycles |
| DESCRIPTION: | Shows weak transcriptional activatory activity. Transcriptional regulator of the type 1 receptor for pituitary adenylate cyclase-activating polypeptide |
| APPLICATION: | WB 1:500-1:1000, IF/ICC 1:100-1:500, ELISA (peptide) 1:20000-1:40000 |

Note: This information is only intended as a guide. The optimal dilutions must be determined by the user.

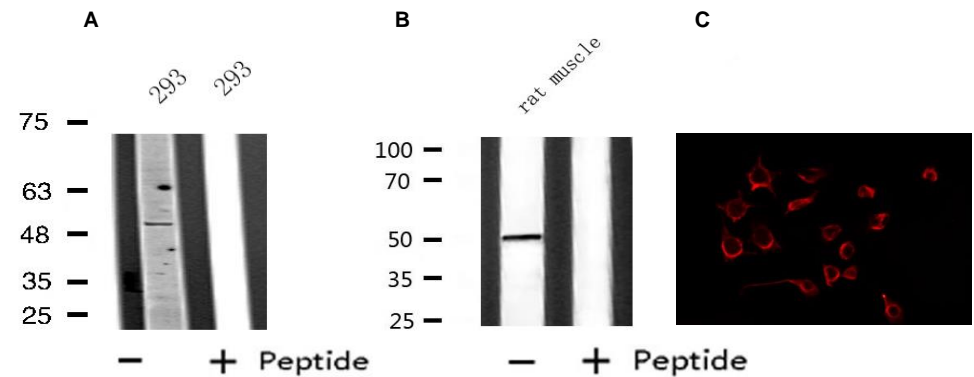


Fig. A. Western blot analysis of extracts from 293 cells, using PLAGL1 antibody

Fig. B. Western blot analysis of extracts from rat muscle, using PLAGL1 Antibody.

Fig. C. IF/ICC staining of 293 using PLAGL1 antibody

RELATED PRODUCTS:

- Anti-NOTCH 2 Antibody (Cat. No. A1652)
- Anti-NOTCH 3 Antibody (Cat. No. A1653)
- Anti-NR2E1 Antibody (Cat. No. A1654)
- Anti-Nucleostemin Antibody (Cat. No. A1655)
- Anti-OLIG2 Antibody (Cat. No. A1656)
- Anti-PAX3 Antibody (Cat. No. A1657)
- Anti-S100B Antibody (Cat. No. A1659)
- Anti-SLUG Antibody (Cat. No. A1660)

FOR RESEARCH USE ONLY! Not to be used on humans.