

Anti- S100B Antibody

| | |
|----------------------------|---|
| CATALOG NO: | A1659-100 100 µl |
| ALTERNATIVE NAMES: | NEF; Protein S100 B; Protein S100-B; S 100 calcium binding protein beta chain |
| CONCENTRATION: | 1 mg/ml |
| IMMUNOGEN: | A synthesized peptide derived from human S100B |
| HOST/ISOTYPE: | Rabbit IgG |
| CLONALITY: | Polyclonal |
| MOL WEIGHT: | 11 kDa |
| SPECIES REACTIVITY: | Human, Mouse, Rat |
| PURIFICATION: | Affinity purification |
| FORM: | Liquid |
| FORMULATION: | Supplied in phosphate buffered saline, pH 7.4, 150 mM NaCl, 0.02% sodium azide and 50% glycerol |
| STORAGE CONDITIONS: | For long term storage store at -20°C in small aliquots to prevent freeze-thaw cycles |
| DESCRIPTION: | Despite their relatively small size (8-12 kDa) and uncomplicated architecture, S100 proteins regulate a variety of cellular processes such as cell growth and motility, cell cycle progression, transcription, and differentiation. To date, 25 members have been identified, including S100A1-S100A18, trichohyalin, filaggrin, repetin, S100P, and S100Z, making it the largest group in the EF-hand, calcium-binding protein family. Interestingly, 14 S100 genes are clustered on human chromosome 1q21, a region of genomic instability. Research studies have demonstrated that significant correlation exists between aberrant S100 protein expression and cancer progression. S100 proteins primarily mediate immune responses in various tissue types but are also involved in neuronal development. |
| APPLICATION: | WB 1:500-1:2000, IHC 1:50-1:200, ELISA (peptide) 1:20000-1:40000 |

Note: This information is only intended as a guide. The optimal dilutions must be determined by the user.

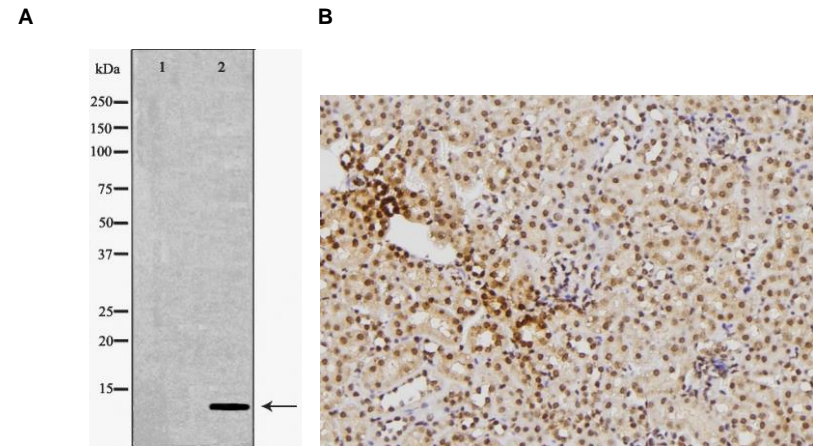


Fig. A. Western blot analysis of A375 lysate using S100B antibody. The lane on the left is treated with the antigen-specific peptide.

Fig. B. IHC staining of mouse kidney tissue using S100B antibody

RELATED PRODUCTS:

- Anti-NOTCH 2 Antibody (Cat. No. A1652)
- Anti-NOTCH 3 Antibody (Cat. No. A1653)
- Anti-NR2E1 Antibody (Cat. No. A1654)
- Anti-Nucleostemin Antibody (Cat. No. A1655)
- Anti-OLIG2 Antibody (Cat. No. A1656)
- Anti-PAX3 Antibody (Cat. No. A1657)
- Anti-PLAGL1 Antibody (Cat. No. A1658)
- Anti-SLUG Antibody (Cat. No. A1660)

FOR RESEARCH USE ONLY! Not to be used on humans.