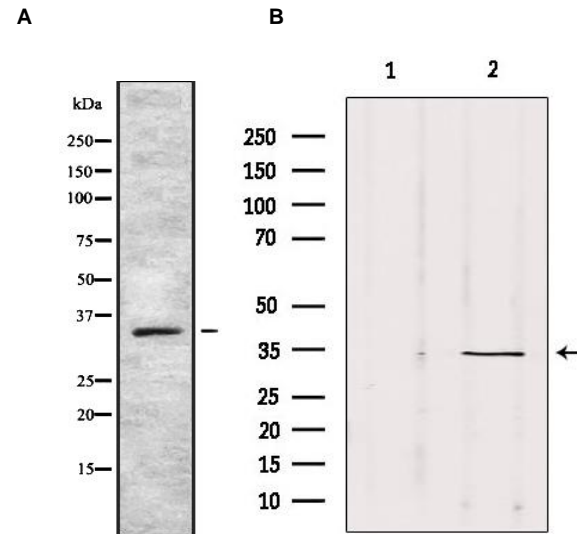


## Anti-SOX12 Antibody

<b>CATALOG NO:</b>	A1663-100	100 µl
<b>ALTERNATIVE NAMES:</b>	Transcription factor SOX-12, Protein SOX-22, SOX12, SOX22	
<b>CONCENTRATION:</b>	1 mg/ml	
<b>IMMUNOGEN:</b>	A synthesized peptide derived from human SOX12	
<b>HOST/ISOTYPE:</b>	Rabbit IgG	
<b>CLONALITY:</b>	Polyclonal	
<b>MOL WEIGHT:</b>	34 kDa	
<b>SPECIES REACTIVITY:</b>	Human, Mouse	
<b>PURIFICATION:</b>	Affinity purification	
<b>FORM:</b>	Liquid	
<b>FORMULATION:</b>	Supplied in phosphate buffered saline, pH 7.4, 150 mM NaCl, 0.02% sodium azide and 50% glycerol	
<b>STORAGE CONDITIONS:</b>	For long term storage store at -20°C in small aliquots to prevent freeze-thaw cycles	
<b>DESCRIPTION:</b>	Binds to the sequence 5'-AACAAAT-3'	
<b>APPLICATION:</b>	WB 1:1000-3000, ELISA (peptide) 1:20000-1:40000	

**Note:** This information is only intended as a guide. The optimal dilutions must be determined by the user.



**Fig. A. Western blot analysis SOX12 using COLO205 whole cell lysates**

**Fig. B. Western blot analysis of extracts from Mouse Myeloma cell, using SOX12 Antibody. Lane 1 was treated with the blocking peptide.**

### RELATED PRODUCTS:

- Anti-NOTCH 2 Antibody (Cat. No. A1652)
- Anti-NOTCH 3 Antibody (Cat. No. A1653)
- Anti-NR2E1 Antibody (Cat. No. A1654)
- Anti-Nucleostemin Antibody (Cat. No. A1655)
- Anti-OLIG2 Antibody (Cat. No. A1656)
- Anti-PAX3 Antibody (Cat. No. A1657)
- Anti-PLAGL1 Antibody (Cat. No. A1658)
- Anti-S100B Antibody (Cat. No. A1659)
- Anti-SLUG Antibody (Cat. No. A1660)
- Anti-SOX12 Antibody (Cat. No. A1661)

**FOR RESEARCH USE ONLY! Not to be used on humans.**