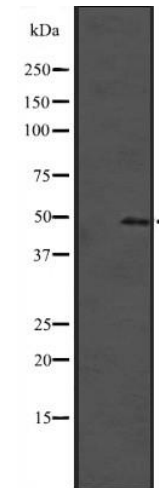


Anti-SOX4 Antibody

CATALOG NO:	A1664-100 100 µl
ALTERNATIVE NAMES:	Ecotropic viral integration site 16; EVI 16; EVI16; Sox4; SOX4_HUMAN; SRY (sex determining region Y) box 4; SRY box containing gene 4; SRY related HMG box gene 4; Transcription factor SOX-4
CONCENTRATION:	1 mg/ml
IMMUNOGEN:	A synthesized peptide derived from human SOX4
HOST/ISOTYPE:	Rabbit IgG
CLONALITY:	Polyclonal
MOL WEIGHT:	47 kDa
SPECIES REACTIVITY:	Human, Mouse
PURIFICATION:	Affinity purification
FORM:	Liquid
FORMULATION:	Supplied in phosphate buffered saline, pH 7.4, 150 mM NaCl, 0.02% sodium azide and 50% glycerol
STORAGE CONDITIONS:	For long term storage store at -20°C in small aliquots to prevent freeze-thaw cycles
DESCRIPTION:	Transcriptional activator that binds with high affinity to the T-cell enhancer motif 5'-AACAAAG-3' motif
APPLICATION:	WB 1:500-1:2000, ELISA (peptide) 1:20000-1:40000

Note: This information is only intended as a guide. The optimal dilutions must be determined by the user.



Western blot analysis of SOX4 expression in Hela cell lysate. The lane on the left is treated with the antigen-specific peptide.

RELATED PRODUCTS:

- Anti-NOTCH 3 Antibody (Cat. No. A1653)
- Anti-NR2E1 Antibody (Cat. No. A1654)
- Anti-Nucleostemin Antibody (Cat. No. A1655)
- Anti-OLIG2 Antibody (Cat. No. A1656)
- Anti-PAX3 Antibody (Cat. No. A1657)
- Anti-PLAGL1 Antibody (Cat. No. A1658)
- Anti-S100B Antibody (Cat. No. A1659)
- Anti-SLUG Antibody (Cat. No. A1660)
- Anti-SOX12 Antibody (Cat. No. A1661)
- Anti-SOX4 Antibody (Cat. No. A1664)

FOR RESEARCH USE ONLY! Not to be used on humans.