

Anti-TGIF1 Antibody

CATALOG NO:	A1667-100 100 µl
ALTERNATIVE NAMES:	Homeobox protein TGIF1, 5'-TG-3'-interacting factor 1, TGIF1, TGIF
CONCENTRATION:	1 mg/ml
IMMUNOGEN:	A synthesized peptide derived from human TGIF1
HOST/ISOTYPE:	Rabbit IgG
CLONALITY:	Polyclonal
MOL WEIGHT:	45 kDa
SPECIES REACTIVITY:	Human, Mouse, Rat
PURIFICATION:	Affinity purification
FORM:	Liquid
FORMULATION:	Supplied in phosphate buffered saline, pH 7.4, 150 mM NaCl, 0.02% sodium azide and 50% glycerol
STORAGE CONDITIONS:	For long term storage store at -20°C in small aliquots to prevent freeze-thaw cycles
DESCRIPTION:	Binds to a retinoid X receptor (RXR) responsive element from the cellular retinol-binding protein II promoter (CRBP-II-RXRE). Inhibits the 9-cis-retinoic acid-dependent RXR alpha transcription activation of the retinoic acid responsive element. Active transcriptional corepressor of SMAD2. Links the nodal signaling pathway to the bifurcation of the forebrain and the establishment of ventral midline structures. May participate in the transmission of nuclear signals during development and in the adult, as illustrated by the down-modulation of the RXR alpha activities
APPLICATION:	WB 1:1000-3000, IF/ICC 1:100-1:500, ELISA (peptide) 1:20000-1:40000
	Note: This information is only intended as a guide. The optimal dilutions must be determined by the user.

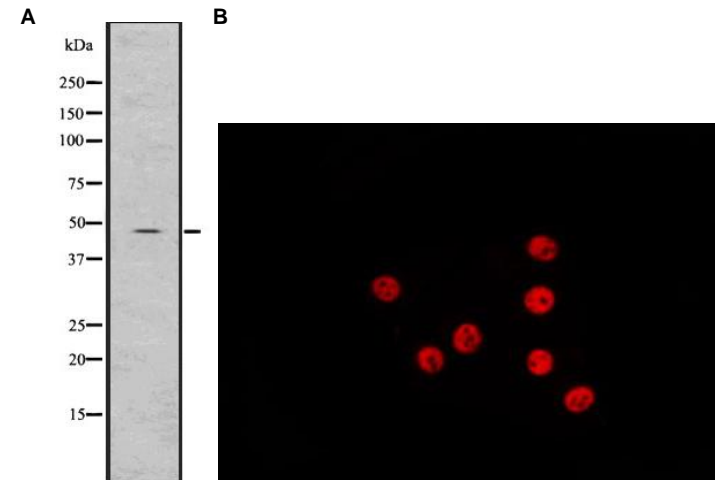


Fig. A. Western blot analysis of TGIF1 using HeLa whole lysates

Fig. B. IF/ICC staining of 293T cells using TGIF1 antibody

RELATED PRODUCTS:

- Anti-NOTCH 3 Antibody (Cat. No. A1653)
- Anti-NR2E1 Antibody (Cat. No. A1654)
- Anti-Nucleostemin Antibody (Cat. No. A1655)
- Anti-OLIG2 Antibody (Cat. No. A1656)
- Anti-PAX3 Antibody (Cat. No. A1657)
- Anti-PLAGL1 Antibody (Cat. No. A1658)
- Anti-S100B Antibody (Cat. No. A1659)
- Anti-SLUG Antibody (Cat. No. A1660)
- Anti-SOX12 Antibody (Cat. No. A1661)
- Anti-SOX4 Antibody (Cat. No. A1664)

FOR RESEARCH USE ONLY! Not to be used on humans.