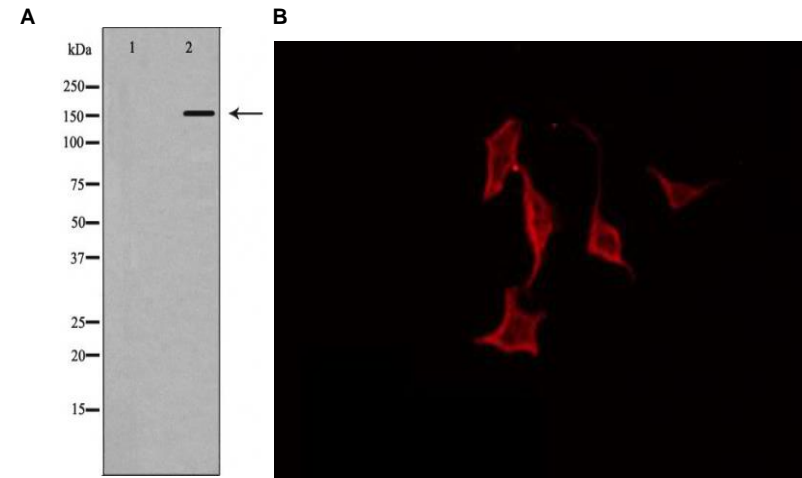


## Anti-Integrin $\beta$ 1 Antibody

<b>CATALOG NO:</b>	A1669-100	100 $\mu$ l
<b>ALTERNATIVE NAMES:</b>	Integrin beta-1, Fibronectin receptor subunit beta, GPIIA, CD29, FNRB, MDF2, MSK12	
<b>CONCENTRATION:</b>	1 mg/ml	
<b>IMMUNOGEN:</b>	A synthesized peptide derived from human SOX4	
<b>HOST/ISOTYPE:</b>	Rabbit IgG	
<b>CLONALITY:</b>	Polyclonal	
<b>MOL WEIGHT:</b>	160 kDa	
<b>SPECIES REACTIVITY:</b>	Human, Mouse, Rat	
<b>PURIFICATION:</b>	Affinity purification	
<b>FORM:</b>	Liquid	
<b>FORMULATION:</b>	Supplied in phosphate buffered saline, pH 7.4, 150 mM NaCl, 0.02% sodium azide and 50% glycerol	
<b>STORAGE CONDITIONS:</b>	For long term storage store at -20°C in small aliquots to prevent freeze-thaw cycles	
<b>DESCRIPTION:</b>	Integrin alpha-V/beta-1 is a receptor for vitronectin. Beta-1 integrins recognize the sequence R-G-D in a wide array of ligands. Isoform 2 interferes with isoform 1 resulting in a dominant negative effect on cell adhesion and migration (in vitro). When associated with alpha-7/beta-1 integrin, regulates cell adhesion and laminin matrix deposition. Involved in promoting endothelial cell motility and angiogenesis. Involved in osteoblast compaction through the fibronectin fibrillogenesis cell-mediated matrix assembly process and the formation of mineralized bone nodules. May be involved in up-regulation of the activity of kinases such as PKC via binding to KRT1.	
<b>APPLICATION:</b>	WB 1:500-1:2000, IF/ICC 1:100-1:500, ELISA (peptide) 1:20000-1:40000	

**Note:** This information is only intended as a guide. The optimal dilutions must be determined by the user.



**Fig. A. Western blot analysis of Integrin  $\beta$ 1 expression in Jurkat cells. The lane on the left is treated with the antigen-specific peptide.**

**Fig. B. IF/ICC staining of HeLa cells by Anti- Integrin  $\beta$ 1 Antibody**

### RELATED PRODUCTS:

- Anti-Integrin beta-1 Rabbit Monoclonal Antibody (**Cat. No. A1598**)
- SCF Antibody (**Cat. No. 6646**)
- SCF Antibody (**Cat. No. 5328**)
- SCF Antibody (**Cat. No. 5327**)
- OCT4 (OCT3) Antibody (**Cat. No. 6765**)
- Oct-4 Antibody (**Cat. No. 3576**)

**FOR RESEARCH USE ONLY! Not to be used on humans.**