

Anti-STAT3 Antibody

CATALOG NO:	A1670-100	100 µl
ALTERNATIVE NAMES:	APRF; Signal transducer and activator of transcription 3; Acute-phase response factor	
CONCENTRATION:	1 mg/ml	
IMMUNOGEN:	A synthesized peptide derived from human STAT3	
HOST/ISOTYPE:	Rabbit IgG	
CLONALITY:	Polyclonal	
MOL WEIGHT:	86 kDa	
SPECIES REACTIVITY:	Human, Mouse, Rat	
PURIFICATION:	Affinity purification	
FORM:	Liquid	
FORMULATION:	Supplied in phosphate buffered saline, pH 7.4, 150 mM NaCl, 0.02% sodium azide and 50% glycerol	
STORAGE CONDITIONS:	For long term storage store at -20°C in small aliquots to prevent freeze-thaw cycles	
DESCRIPTION:	Membrane receptor signaling by various ligands induces activation of Jak kinases which then leads to tyrosine phosphorylation of the various Stat transcription factors. Stat1 and Stat2 are induced by IFN- α and form a heterodimer which is part of the ISGF3 transcription factor complex. Although early reports indicate Stat3 activation by EGF and IL-6, it has been shown that Stat3 β appears to be activated by both while Stat3 α is activated by EGF, but not by IL-6. Highest expression of Stat4 is seen in testis and myeloid cells. IL-12 has been identified as an activator of Stat4. Stat5 is activated by prolactin and by IL-3. Stat6 is involved in IL-4 activated signaling pathways.	
APPLICATION:	WB 1:500-1:2000, IHC 1:50-1:200, IF/ICC 1:100-1:500, ELISA (peptide) 1:20000-1:40000	

Note: This information is only intended as a guide. The optimal dilutions must be determined by the user.

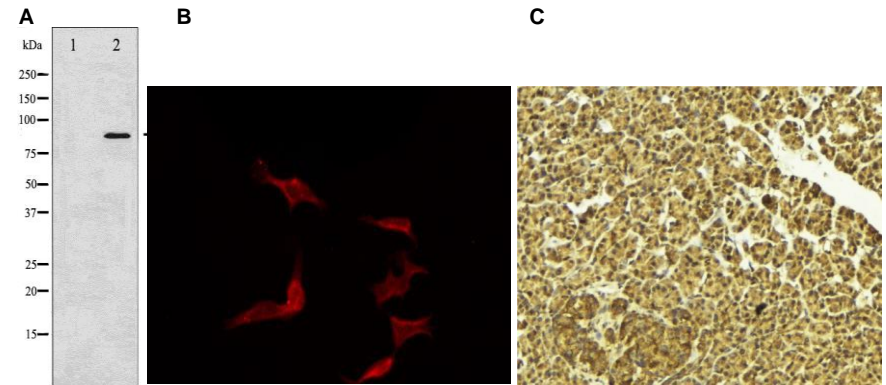


Fig. A. Western blot analysis of STAT3 expression in K562 whole cell lysates, The lane on the left is treated with the antigen-specific peptide.

Fig. B. IF/ICC staining of LOVO cells using STAT3 antibody

Fig. C. IHC staining of Mouse pancreas tissue using STAT3 antibody

RELATED PRODUCTS:

- Anti-Integrin beta-1 Rabbit Monoclonal Antibody (**Cat. No. A1598**)
- SCF Antibody (**Cat. No. 6646**)
- SCF Antibody (**Cat. No. 5328**)
- SCF Antibody (**Cat. No. 5327**)
- OCT4 (OCT3) Antibody (**Cat. No. 6765**)
- Oct-4 Antibody (**Cat. No. 3576**)
- STAT3 Antibody (**Cat. No. 3470R**)

FOR RESEARCH USE ONLY! Not to be used on humans.