

Anti-CD168 Antibody

CATALOG NO:	A1671-100 100 µl
ALTERNATIVE NAMES:	IHABP; RHAMM; Hyaluronan mediated motility receptor; Intracellular hyaluronic acid-binding protein; Receptor for hyaluronan-mediated motility; CD168
CONCENTRATION:	1 mg/ml
IMMUNOGEN:	A synthesized peptide derived from human CD168
HOST/ISOTYPE:	Rabbit IgG
CLONALITY:	Polyclonal
MOL WEIGHT:	84 kDa
SPECIES REACTIVITY:	Human, Mouse, Rat
PURIFICATION:	Affinity purification
FORM:	Liquid
FORMULATION:	Supplied in phosphate buffered saline, pH 7.4, 150 mM NaCl, 0.02% sodium azide and 50% glycerol
STORAGE CONDITIONS:	For long term storage store at -20°C in small aliquots to prevent freeze-thaw cycles
DESCRIPTION:	The protein encoded by this gene is involved in cell motility. It is expressed in breast tissue and together with other proteins, it forms a complex with BRCA1 and BRCA2, thus is potentially associated with higher risk of breast cancer. Alternatively spliced transcript variants encoding different isoforms have been noted for this gene.
APPLICATION:	WB 1:500-1:2000, IHC 1:50-1:200, IF/ICC 1:100-1:500, ELISA (peptide) 1:20000-1:40000
	Note: This information is only intended as a guide. The optimal dilutions must be determined by the user.

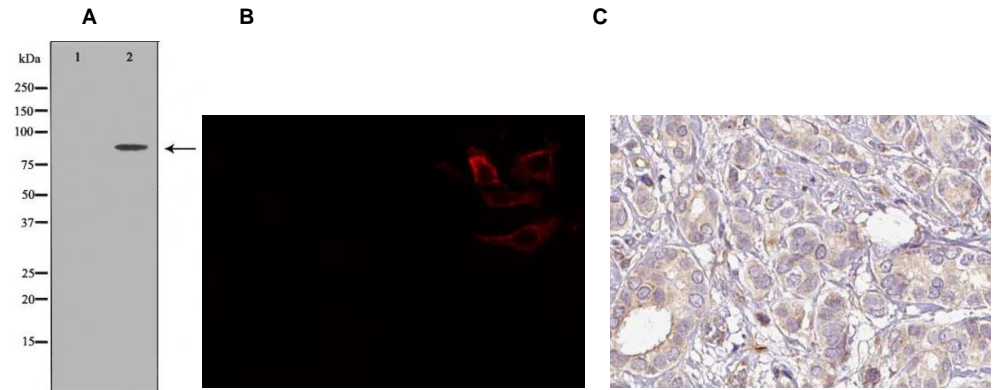


Fig. A. Western blot analysis of HeLa whole cell lysates, using HMMR Antibody. The lane on the left is treated with the antigen-specific peptide.

Fig. B. IF/ICC staining of HepG2 cells using CD168 antibody

Fig. C. IHC staining of Human breast cancer tissue using CD168 antibody

RELATED PRODUCTS:

- Anti-Integrin beta-1 Rabbit Monoclonal Antibody (**Cat. No. A1598**)
- SCF Antibody (**Cat. No. 6646**)
- SCF Antibody (**Cat. No. 5328**)
- SCF Antibody (**Cat. No. 5327**)
- OCT4 (OCT3) Antibody (**Cat. No. 6765**)
- Oct-4 Antibody (**Cat. No. 3576**)
- STAT3 Antibody (**Cat. No. 3470R**)

FOR RESEARCH USE ONLY! Not to be used on humans.