

Anti-Cripto 1 Antibody

CATALOG NO:	A1672-100 100 µl
ALTERNATIVE NAMES:	CRIPTO; Teratocarcinoma-derived growth factor 1; Cripto-1 growth factor; CRGF; Epidermal growth factor-like cripto protein CR1
CONCENTRATION:	1 mg/ml
IMMUNOGEN:	A synthesized peptide derived from human Cripto 1
HOST/ISOTYPE:	Rabbit IgG
CLONALITY:	Polyclonal
MOL WEIGHT:	21 kDa
SPECIES REACTIVITY:	Human, Mouse, Rat
PURIFICATION:	Affinity purification
FORM:	Liquid
FORMULATION:	Supplied in phosphate buffered saline, pH 7.4, 150 mM NaCl, 0.02% sodium azide and 50% glycerol
STORAGE CONDITIONS:	For long term storage store at -20°C in small aliquots to prevent freeze-thaw cycles
DESCRIPTION:	GPI-anchored cell membrane protein involved in Nodal signaling. Cell-associated TDGF1 acts as a Nodal coreceptor in cis. Shedding of TDGF1 by TMEM8A modulates Nodal signaling by allowing soluble TDGF1 to act as a Nodal coreceptor on other cells. Could play a role in the determination of the epiblastic cells that subsequently give rise to the mesoderm.
APPLICATION:	WB 1:500-1:2000, IHC 1:50-1:200, ELISA (peptide) 1:20000-1:40000

Note: This information is only intended as a guide. The optimal dilutions must be determined by the user.

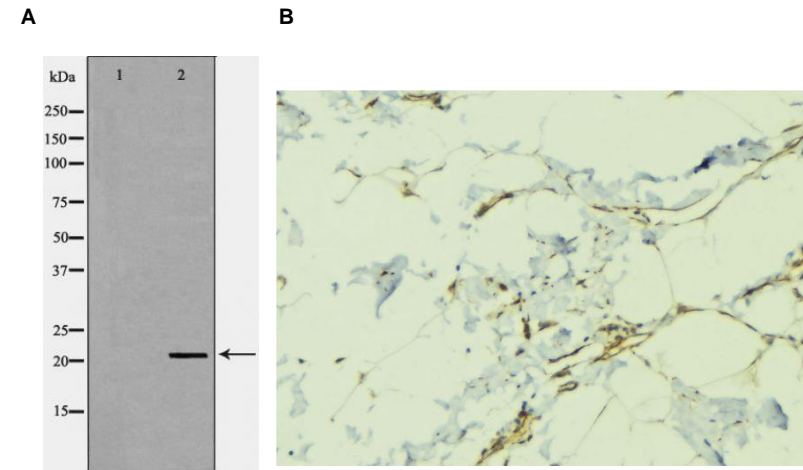


Fig. A. Western blot analysis of NCCIT lysate using Cripto 1 antibody. The lane on the left is treated with the antigen-specific peptide.

Fig. B. IHC staining of human lung tissue using Cripto 1 antibody

RELATED PRODUCTS:

- Anti-Integrin beta-1 Rabbit Monoclonal Antibody (**Cat. No. A1598**)
- SCF Antibody (**Cat. No. 6646**)
- SCF Antibody (**Cat. No. 5328**)
- SCF Antibody (**Cat. No. 5327**)
- OCT4 (OCT3) Antibody (**Cat. No. 6765**)
- Oct-4 Antibody (**Cat. No. 3576**)
- STAT3 Antibody (**Cat. No. 3470R**)
- Anti-CD168 Antibody (**Cat. No. A1672**)

FOR RESEARCH USE ONLY! Not to be used on humans.