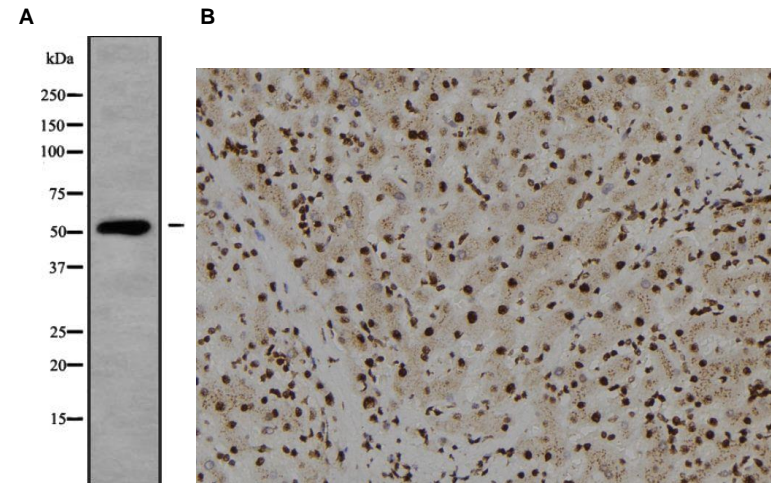


## Anti-TF2L1 Antibody

|                            |   |        |
|----------------------------|---|--------|
| <b>CATALOG NO:</b>         | A1673-100   | 100 µl |
| <b>ALTERNATIVE NAMES:</b>  | CRTR1; LBP9; Transcription factor CP2-like protein 1; CP2-related transcriptional repressor 1; CRTR-1; Transcription factor LBP-9   |        |
| <b>CONCENTRATION:</b>      | 1 mg/ml   |        |
| <b>IMMUNOGEN:</b>          | A synthesized peptide derived from human TF2L1  |        |
| <b>HOST/ISOTYPE:</b>       | Rabbit IgG  |        |
| <b>CLONALITY:</b>          | Polyclonal  |        |
| <b>MOL WEIGHT:</b>         | 55 kDa  |        |
| <b>SPECIES REACTIVITY:</b> | Human, Mouse, Rat   |        |
| <b>PURIFICATION:</b>       | Affinity purification   |        |
| <b>FORM:</b>               | Liquid  |        |
| <b>FORMULATION:</b>        | Supplied in phosphate buffered saline, pH 7.4, 150 mM NaCl, 0.02% sodium azide and 50% glycerol   |        |
| <b>STORAGE CONDITIONS:</b> | For long term storage store at -20°C in small aliquots to prevent freeze-thaw cycles  |        |
| <b>DESCRIPTION:</b>        | Transcription factor that facilitates establishment and maintenance of pluripotency in embryonic stem cells (ESCs). With KLF2, acts as the major effector of self-renewal that mediates induction of pluripotency downstream of LIF/STAT3 and Wnt/beta-catenin signaling (By similarity). Required for normal duct development in the salivary gland and kidney . Coordinates the development of the kidney collecting ducts intercalated (IC) and principal (PC) cells, which regulate acid-base and salt-water homeostasis, respectively. |        |
| <b>APPLICATION:</b>        | WB 1:1000-1:3000, IHC 1:200, ELISA (peptide) 1:20000-1:40000  |        |

**Note:** This information is only intended as a guide. The optimal dilutions must be determined by the user.



**Fig. A.** Western blot analysis of TF2L1 using HT-29 whole cell lysates.

**Fig. B.** IHC staining of Human liver tissue using TF2L1 antibody

### RELATED PRODUCTS:

- Anti-Integrin beta-1 Rabbit Monoclonal Antibody (**Cat. No. A1598**)
- SCF Antibody (**Cat. No. 6646**)
- SCF Antibody (**Cat. No. 5328**)
- SCF Antibody (**Cat. No. 5327**)
- OCT4 (OCT3) Antibody (**Cat. No. 6765**)
- Oct-4 Antibody (**Cat. No. 3576**)
- STAT3 Antibody (**Cat. No. 3470R**)

**FOR RESEARCH USE ONLY! Not to be used on humans.**