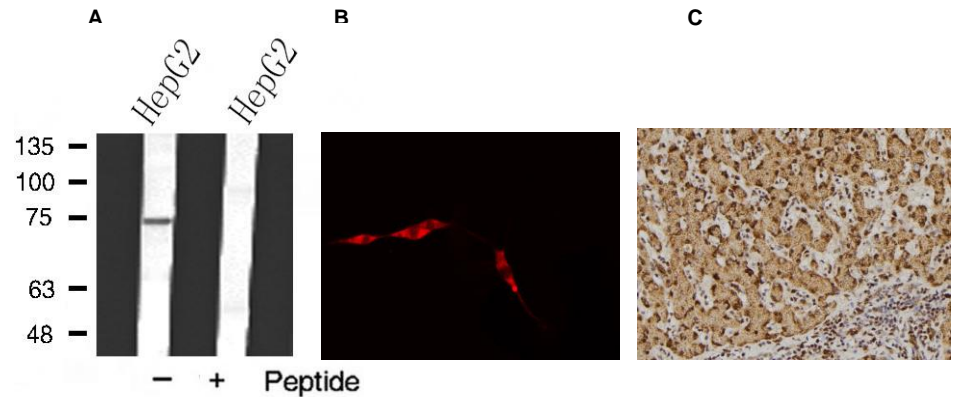


## Anti-DDX3 Antibody

<b>CATALOG NO:</b>	A1675-100	100 µl
<b>ALTERNATIVE NAMES:</b>	DBX; DDX3; ATP-dependent RNA helicase DDX3X; DEAD box protein 3. X-chromosomal; DEAD box. X isoform; Helicase-like protein 2; HLP2	
<b>CONCENTRATION:</b>	1 mg/ml	
<b>IMMUNOGEN:</b>	A synthesized peptide derived from human DDX3	
<b>HOST/ISOTYPE:</b>	Rabbit IgG	
<b>CLONALITY:</b>	Polyclonal	
<b>MOL WEIGHT:</b>	73 kDa	
<b>SPECIES REACTIVITY:</b>	Human, Mouse, Rat	
<b>PURIFICATION:</b>	Affinity purification	
<b>FORM:</b>	Liquid	
<b>FORMULATION:</b>	Supplied in phosphate buffered saline, pH 7.4, 150 mM NaCl, 0.02% sodium azide and 50% glycerol	
<b>STORAGE CONDITIONS:</b>	For long term storage store at -20°C in small aliquots to prevent freeze-thaw cycles	
<b>DESCRIPTION:</b>	ATP-dependent RNA helicase. Acts as a cofactor for XPO1-mediated nuclear export of incompletely spliced HIV-1 Rev RNAs. Also involved in HIV-1 replication. Interacts specifically with hepatitis C virus core protein resulting in a change in intracellular location	
<b>APPLICATION:</b>	WB 1:500-1:2000, IHC 1:50-1:200, IF/ICC 1:100-1:500, ELISA (peptide) 1:20000-1:40000	

**Note:** This information is only intended as a guide. The optimal dilutions must be determined by the user.



**Fig. A.** Western blot analysis of DDX3/DEAD box Protein 3 expression in HepG2 cells

**Fig. B.** IF/ICC analysis of DDX3 staining in HeLa cells

**Fig. C.** IHC analysis of DDX3 in Human liver tissue

### RELATED PRODUCTS:

- Anti-Integrin beta-1 Rabbit Monoclonal Antibody (**Cat. No. A1598**)
- SCF Antibody (**Cat. No. 6646**)
- SCF Antibody (**Cat. No. 5328**)
- SCF Antibody (**Cat. No. 5327**)
- OCT4 (OCT3) Antibody (**Cat. No. 6765**)
- Oct-4 Antibody (**Cat. No. 3576**)
- STAT3 Antibody (**Cat. No. 3470R**)

**FOR RESEARCH USE ONLY! Not to be used on humans.**